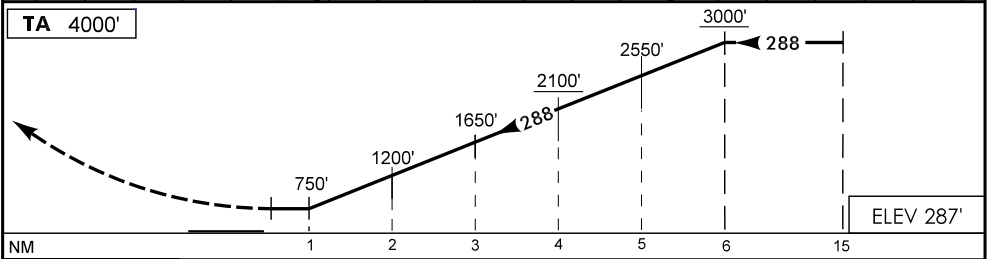
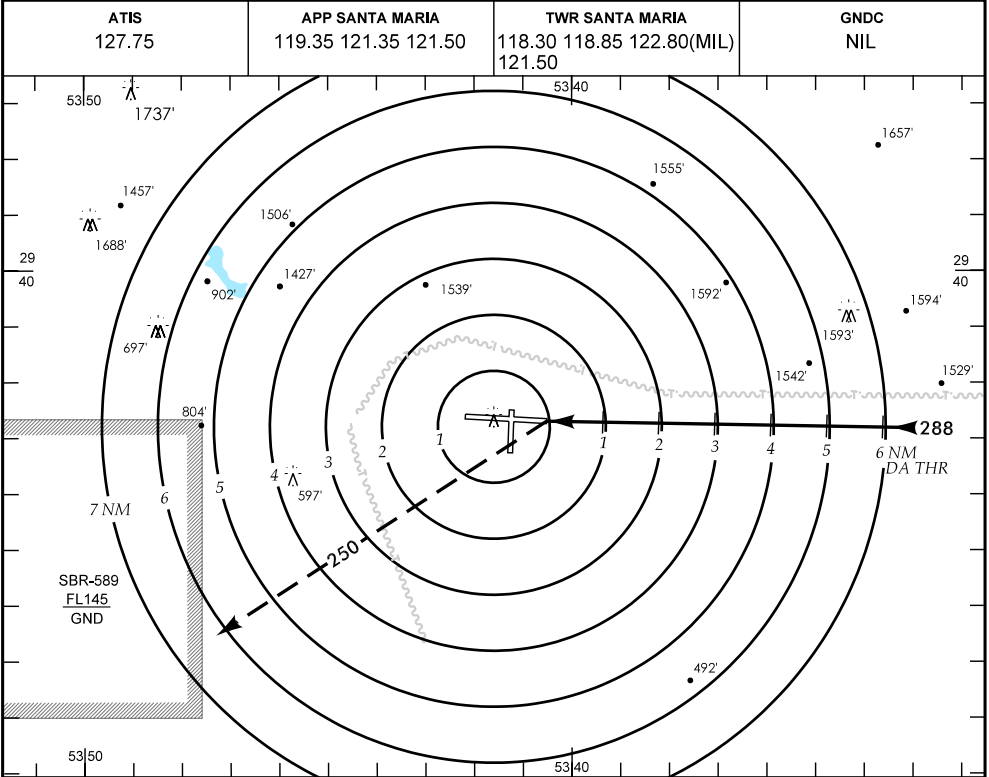


**IAC - SBSM**

WGS-84



**APROXIMAÇÃO PERDIDA** SUBIR PARA 4000' EM CURVA À ESQUERDA NO RUMO 250.

**RMK:** POUSO RWY 29 - CIRCULE SECT S DO AD.

<b>C</b>	POUSO DIRETO RWY 29	IFR OPS DIURNA / NOTURNA	PARA CIRCULAR			
<b>A</b>	RADAR					
<b>T</b>	<b>MDA 670'</b>	<b>TETO 400'</b>	<b>( RMK )</b>			
	VIS		CAT	MDA	TETO	VIS
<b>A</b>	1600 M		<b>A</b>	740'	500'	1600 M
<b>B</b>			<b>B</b>			
<b>C</b>	2000 M		<b>C</b>	900'	700'	2800 M
<b>D</b>			<b>D</b>			
<b>E</b>	2400 M		<b>E</b>	1200'	1000'	4800 M

RAZÃO DE DESCIDA NA APROXIMAÇÃO FINAL						
KT	090	110	130	150	170	190
FPM	700	850	1000	1150	1300	1450