

INSTRUMENT APPROACH
CHART (IAC)

PORTO ALEGRE / Canoas, MIL (SBCO)

AD ELEV: 26'

RNAV(GNSS) Y RWY 31

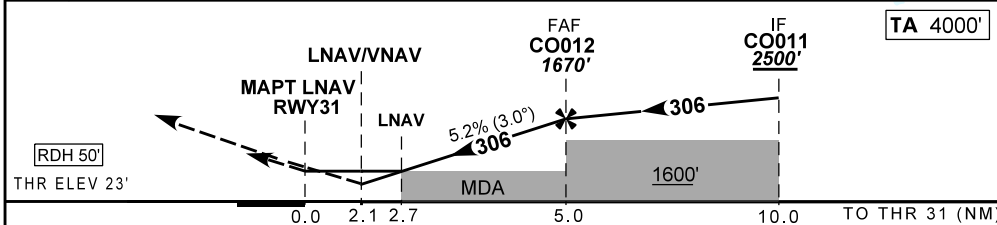
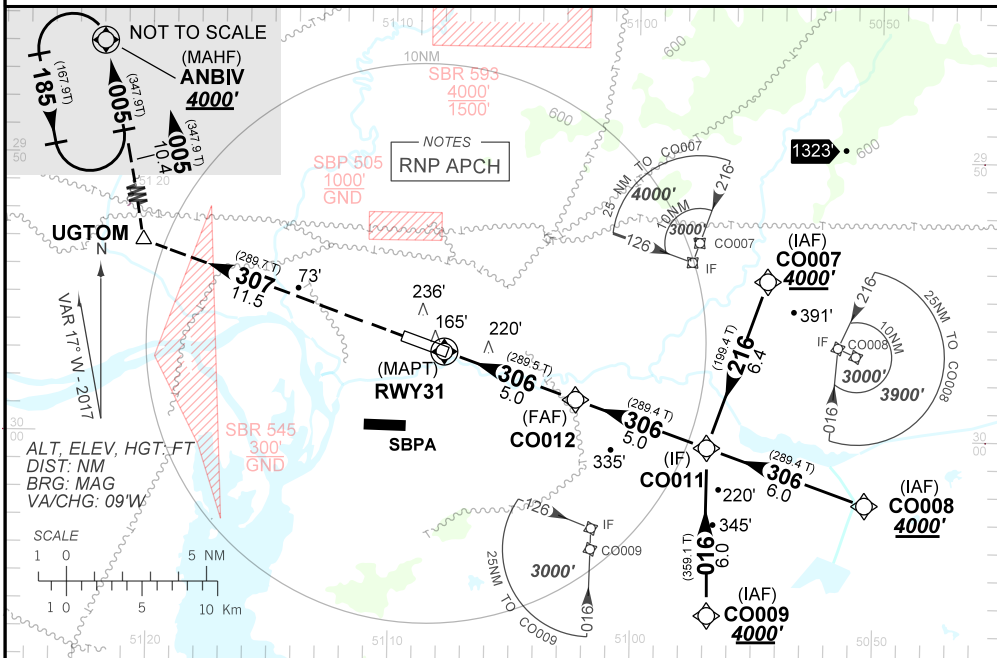
ATIS NIL	APP PALEGRE 119.00 120.10 120.55 128.90 121.50	TWR CANOAS 118.50 122.80 (MIL) 121.50	GNDC CANOAS 121.70
-------------	--	---	-----------------------

N/A	FINAL CRS 306°	FAF 1670'	LNAV/VNAV DA / (OCH): 750' / (730')	LNAV MDA / (OCH): 950' / (930')
-----	-------------------	--------------	--	------------------------------------

APCH Perdida: 1) Subir para **4000'** no rumo **307°** até UGTOM. Após, curvar a DIREITA rumo **005°** até ANBIV para espera.

Missed APCH: 1) Climb to **4000'** on course **307°** up to UGTOM. Then, turn RIGHT course **005°** up to ANBIV for holding.

RMK: 1) Para sistemas BARO-VNAV não compensados, procedimento LNAV/VNAV não autorizado abaixo de -10° C. 1) For uncompensated systems BARO-VNAV, LNAV/VNAV procedure not authorized below -10° C.



RWY31	1.0	2.0	2.7	3.0	4.0	CO012	KT	090	110	130	150	170	190
ALT	391	710	950	1028	1347	1670	FPM	500	600	700	800	900	1000
(HGT)	368	687	927	1005	1324	1647	FAF-MAPT	NA					

STRAIGHT-IN	CAT	A	B	C	D	E
LNAV/VNAV	DA / (OCH)	750' / (730')				NA
	ALS/NO ALS/ RVR ALS (m)	NIL / 3400 / NIL				
LNAV	MDA / (OCH)	950' / (930')				
	ALS/NO ALS/ RVR ALS (m)	NIL / 3400 / NIL		NIL / 4300 / NIL		
CIRCLING	MDA / (OCH)	NA				
	VIS (m)					

CHANGES: RWY: