

**INSTRUMENT APPROACH
CHART (IAC)**

ORIXIMINÁ / Trombetas (SBTB)

AD ELEV: 172'

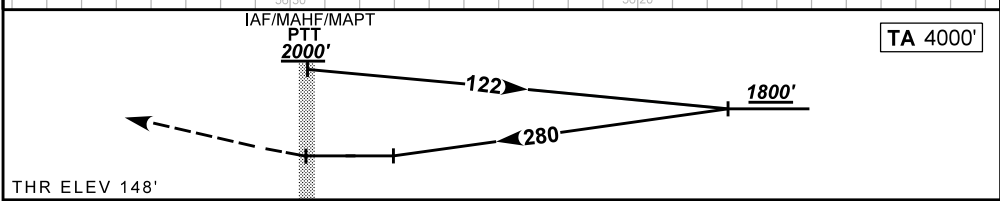
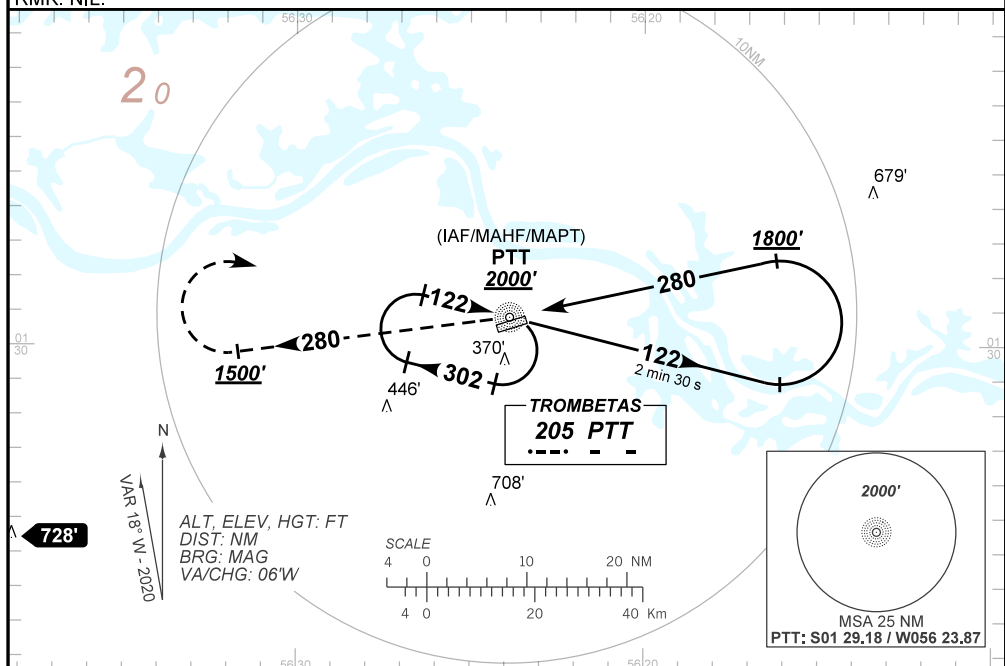
NDB RWY 27

ATIS NIL	APP NIL	AFIS TROMBETAS 131.60	GNDC NIL
NDB PTT 205 KHz	FINAL CRS 280°	N/A	NDB MDA / (OCH): 880' / (740')

APCH Perdida: Subir para **2000'**. Manter o QDR **280** do NDB PTT até **1500'**. Após, curvar à DIREITA direto NDB PTT para espera.

Missed APCH: Climb to **2000'**. Maintain **280** QDR PTT NDB until **1500'**. After, turn RIGHT direct to PTT NDB for holding.

RMK: NIL.



RWY27	NIL	KT	090	110	130	160	170	190
ALT	NIL	FPM	640			NA		
(HGT)	NIL	FAF-MAPT	NA					

STRAIGHT-IN	CAT	A	B	C	D	E
NDB	MDA / (OCH)	880' / (740')			NA	
	ALS/NO ALS/ RVR ALS (m)	NIL / 1600 / NIL		NIL / 3400 / NIL		
CIRCLING	MDA / (OCH)	NA				
	VIS (m)					

CHANGES: LAYOUT, MDA, PROC. TA, THEL.