

AD ELEV: 2461'

ILS X ou/ou LOC X RWY 09L

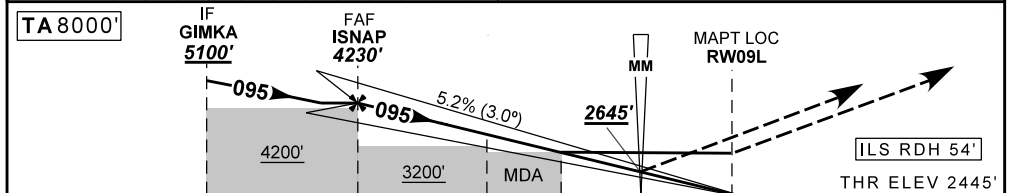
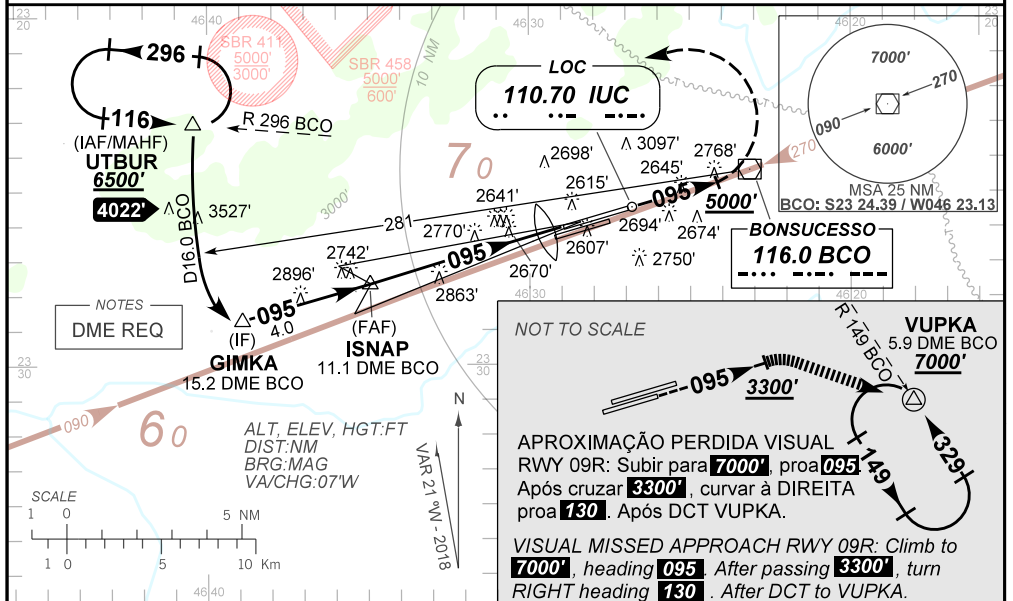
D-ATIS 127.75	APP SÃO PAULO 129.75 119.15 120.45 120.85 133.85 121.50	TWR GUARULHOS 118.40 132.75 135.20 121.50	GNDC GUARULHOS 121.70 126.90
LOC IUC 110.70 MHz	FINAL CRS 095°	FAF: 4230'	CAT I DA / (OCH): 2645' (200')
		LOC MDA / (OCH): 3020' (580')	

APCH Perdida: 1) Subir para **6500'**, gradiente MNM 5%. Manter rumo **095** até cruzar **5000'**. Após, curvar à ESQUERDA, RDL **296** BCO para espera em UTBUR. 2) IAS MAX 230KT até UTBUR.

Missed APCH: 1) Climb to **6500'**, MNM gradient 5%. Maintain course **095** until **5000'**. Then, turn LEFT **296** BCO RDL for holding at UTBUR. 2) IAS MAX 230KT until UTBUR.

RMK: 1) (*) VIS RVR ALS 550m para aproximação utilizando Diretor de Voo, Piloto Automático ou Head-Up Display (HUD).

1) (*) VIS RVR ALS 550m for approach using a Flight Director, Autopilot or Head-Up Display (HUD).



TO THR 09L (NM)	9.6	5.5	2.8	1.6	0.5	0.0
TO BCO (DME)	15.2	11.1	8.4	7.2	6.1	5.6

ISNAP	4.0	3.0	2.0	1.6	0.5	RW09L
4230	3773	3454	3136	3020	2645	ALT
1785	1328	1010	691	575	200	(HGT)
KT	090	110	130	150	170	190
FPM	500	600	700	800	900	1000
FAF-MAPT	NA					

STRAIGHT-IN	CAT	A	B	C	D	E
	DA / (OCH)	2645' / (200')				
CAT I	ALS/NO ALS/ RVR ALS (m)	800 / 1200 / 700 (*)				
	MDA / (OCH)	3020' / (580')				
LOC	ALS/NO ALS/RVR ALS (m)	800 / 1600 / NIL		1900 / 2600 / NIL		
	MDA / (OCH)	NA				
CIRCLING	MDA / (OCH)	NA				
	VIS (m)	NA				

CHANGES: PROC. LAYOUT.