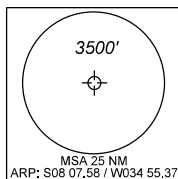


CARTA DE CHEGADA PADRÃO
 POR INSTRUMENTOS (STAR)
 STANDARD ARRIVAL CHART
 INSTRUMENT (STAR)

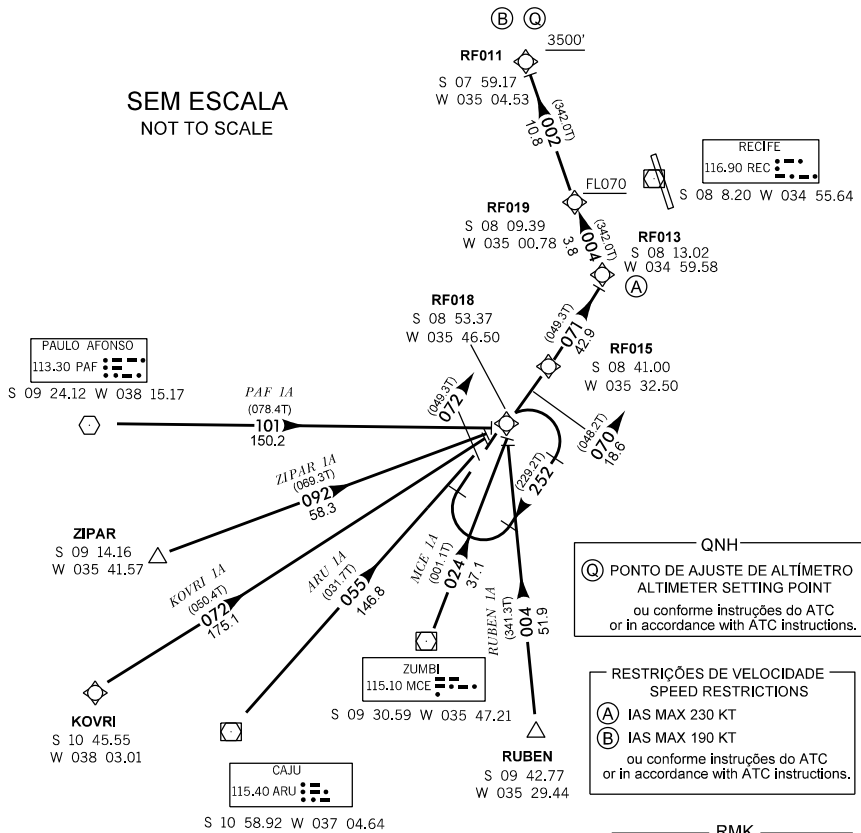
RECIFE / Guararapes - Gilberto Freyre, INTL (SBRF)
RWY 18
 RNAV ARU 1A - KOVRI 1A - MCE 1A
 - PAF 1A - RUBEN 1A - ZIPAR 1A

TA 4000'	ATIS 127.65	ACC RECIFE 133.65 134.50 121.50	APP RECIFE 119.50 119.95 129.60 121.50	TWR RECIFE 118.35 122.80 (MIL) 121.50
----------	----------------	------------------------------------	---	--

ALT. ELEV E HGT EM PÉS
 ALT. ELEV AND HGT IN FEET
 DEC/VAR: 22° W (2009)
 VA/CHG: 03° W



SEM ESCALA
 NOT TO SCALE



MODIFICAÇÕES / CHANGES: COORD.

CARTA DE CHEGADA PADRÃO
POR INSTRUMENTOS (STAR)
STANDARD ARRIVAL CHART
INSTRUMENT (STAR)

RECIFE / Guararapes - Gilberto Freyre, INTL (SBRF)
RWY 18

RNAV ARU 1A - KOVRI 1A - MCE 1A
- PAF 1A - RUBEN 1A - ZIPAR 1A

INSTRUÇÕES DE CHEGADA

- I - CHEGADA ARU 1A:**
APÓS VOR FLY-BY CAJU VOAR (TF) NO RUMO 055 (031.7T) POR 146.8 NM PARA O WAYPOINT FLY-BY RF018. ENTÃO...
- II - CHEGADA KOVRI 1A:**
APÓS INTERSEÇÃO KOVRI VOAR (TF) NO RUMO 072 (050.4T) POR 175.1 NM PARA O WAYPOINT FLY-BY RF018. ENTÃO...
- III - CHEGADA MCE 1A:**
APÓS VOR FLY-BY ZUMBI VOAR (TF) NO RUMO 024 (001.1T) POR 37.1 NM PARA O WAYPOINT FLY-BY RF018.
ENTÃO...
- IV - CHEGADA PAF 1A:**
APÓS VOR FLY-BY PAULO AFONSO VOAR (TF) NO RUMO 101 (078.4T) POR 150.2 NM PARA O WAYPOINT FLY-BY RF018.
ENTÃO...
- V - CHEGADA RUBEN 1A:**
APÓS INTERSEÇÃO FLY-BY RUBEN VOAR (TF) NO RUMO 004 (341.3T) POR 51.9 NM PARA O WAYPOINT FLY-BY RF018.
ENTÃO...
- VI - CHEGADA ZIPAR 1A:**
APÓS INTERSEÇÃO FLY-BY ZIPAR VOAR (TF) NO RUMO 092 (069.3T) POR 58.3 NM PARA O WAYPOINT FLY-BY RF018.
ENTÃO...
- ... INTERCEPT (TF) O RUMO 070 (048.2T) E VOAR POR 18.6 NM PARA WAYPOINT FLY-BY RF015. APÓS, INTERCEPT (TF) O RUMO 071 (049.3T) E VOAR POR 42.9 NM PARA WAYPOINT FLY-BY RF013. APÓS, INTERCEPT (TF) O RUMO 004 (342.2T) E VOAR POR 3.8 NM PARA WAYPOINT FLY-BY RF019, PASSAR O WAYPOINT RF019 NO FL070 OU ACIMA. APÓS, INTERCEPT (TF) O RUMO 002 (342.0T) E VOAR POR 10.8 NM PARA WAYPOINT FLY-BY RF011, MÍNIMO 3500'.

ARRIVAL INSTRUCTIONS

- I - ARU 1A ARRIVAL:**
AFTER ARACAJU VOR FLY-BY, FLY (TF) ON COURSE 055 (031.7T) FOR 146.8 NM TO WAYPOINT FLY-BY RF018. THEN...
- II - KOVRI 1A ARRIVAL:**
AFTER KOVRI INTERSECTION FLY-BY, FLY (TF) ON COURSE 072 (050.4T) FOR 175.1 NM TO WAYPOINT FLY-BY RF018. THEN...
- III - MCE 1A ARRIVAL:**
AFTER ZUMBI VOR FLY-BY, FLY (TF) ON COURSE 024 (001.1T) FOR 37.1 NM TO WAYPOINT FLY-BY RF018. THEN...
- IV - PAF 1A ARRIVAL:**
AFTER PAULO AFONSO VOR FLY-BY, FLY (TF) ON COURSE 101 (078.4T) FOR 150.2 NM TO WAYPOINT FLY-BY RF018. THEN...
- V - RUBEN 1A ARRIVAL:**
AFTER RUBEN INTERSECTION VOR FLY-BY, FLY (TF) ON COURSE 004 (341.3T) FOR 51.9 NM TO WAYPOINT FLY-BY RF018.
THEN...
- VI - ZIPAR 1A ARRIVAL:**
AFTER ZIPAR INTERSECTION FLY-BY, FLY (TF) ON COURSE 092 (069.3T) FOR 58.3 NM TO INTERSECTION FLY-BY RF018.
THEN...
- ... INTERCEPT (TF) ON COURSE 070 (048.2T) AND FLY FOR 18.6 NM TO WAYPOINT FLY-BY RF015. AFTER, INTERCEPT (TF) ON COURSE 071 (049.3T) AND FLY FOR 42.9 NM TO WAYPOINT FLY-BY RF013. AFTER, INTERCEPT (TF) ON COURSE 004 (342.0T) AND FLY FOR 3.8 NM TO WAYPOINT FLY-BY RF019, CROSS WAYPOINT FLY-BY RF019 AT FL070 OR ABOVE. AFTER, INTERCEPT (TF) ON COURSE 002 (342.0T) AND FLY FOR 10.8 NM TO WAYPOINT FLY-BY RF011, MINIMUM 3500'.

MODIFICAÇÕES / CHANGES: COORD.