

**INSTRUMENT APPROACH
CHART (IAC)**

ANÁPOLIS / Base Aérea, MIL (SBAN)

AD ELEV: 3732'

ILS X ou/ou LOC X RWY 24R

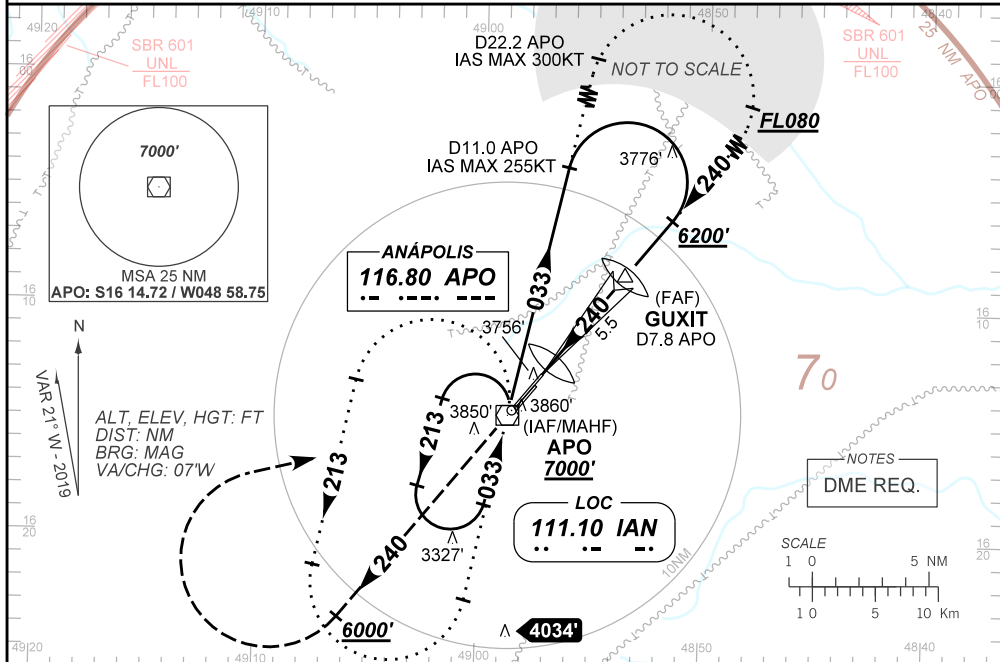
ATIS NIL	APP ANÁPOLIS 119.15 120.55 129.45 133.00 121.50	TWR ANÁPOLIS 118.30 121.25 121.50	GNDC ANÁPOLIS 121.90
--------------------	---	---	--------------------------------

LOC IAN 111.10 MHz	FINAL CRS 240°	FAF: 5230'	CAT I DA / (OCH): 3945' / (289')	LOC MDA / (OCH): 4110' / (460')
------------------------------	--------------------------	----------------------	--	---

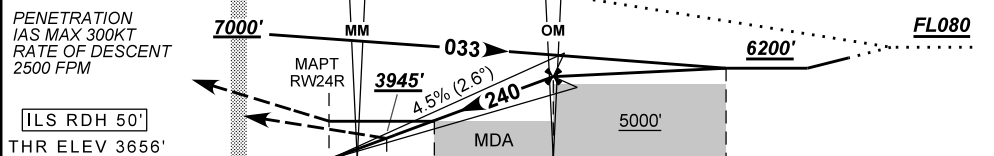
APCH Perdida: Subir para **7000'**. Manter a RDL **240** do VOR APO até **6000'**. Curvar à DIREITA direto VOR APO para espera.

Missed APCH: Climb to **7000'**. Maintain **240** RDL APO VOR up to **6000'**. Turn RIGHT direct APO VOR for holding.

RMK: NIL.



PENETRAÇÃO IAS MAX 300KT RAZÃO DE DESCIDA 2500 FPM	IAF/MAHF APO FL190	FAF GUXIT 5230'	TA 7000'
---	---------------------------------	------------------------------	-----------------



0.0	0.6	0.9	1.5	5.5	8.7	TO THR 24R (NM)
2.3	2.9	3.2	3.8	7.8	11.0	TO APO (DME)

RWY24R	1.5	2.0	3.0	4.0	5.0	GUXIT	KT	090	110	130	150	170	190
ALT	4110	4258	4534	4810	5086	5230	FPM	400	500	600	700	800	900
(HGT)	460	602	878	1154	1430	1574	FAF-MAPT	NA					

STRAIGHT-IN	CAT	A	B	C	D	E
CAT I	DA / (OCH)	3945' / (289')				
	ALS/NO ALS/ RVR ALS (m)	NIL / 1400 / NIL				
LOC	MDA / (OCH)	4110' / (460')				
	ALS/NO ALS/ RVR ALS (m)	NIL / 1600 / NIL		NIL / 2100 / NIL		

CHANGES: ADEL, DA, IDENT, LAYOUT, MDA, MSA, PROC, VAR.