

**INSTRUMENT APPROACH  
CHART (IAC)**

**SALVADOR / Deputado Luís Eduardo Magalhães, INTL (SBSV)**

**AD ELEV: 63'**

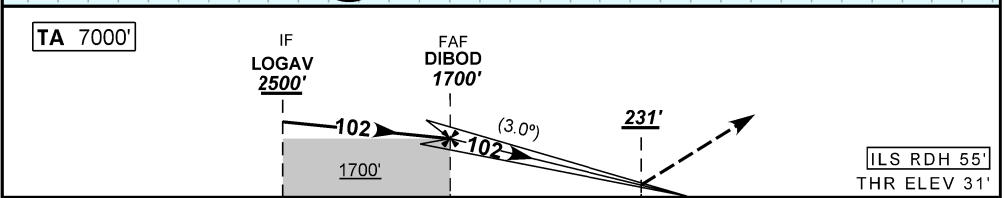
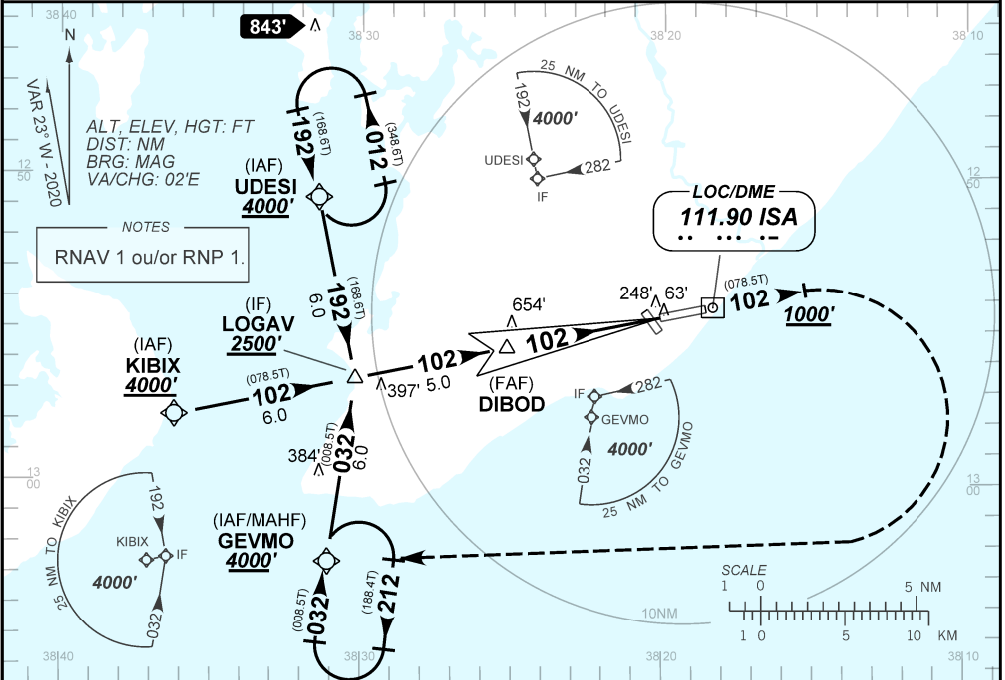
**ILS Z RWY 10**

D-ATIS <b>127.75</b>	APP SALVADOR <b>119.35 119.80 120.80 129.45</b>		TWR SALVADOR <b>118.30 118.60 118.95 121.10 121.50</b>		GNDCL SALVADOR <b>121.90</b>
LOC ISA <b>111.90 MHz</b>	FINAL CRS <b>102°</b>	FAF: <b>1700'</b>	CAT I DA / (OCH): <b>231' / (200')</b>		N/A

APCH Perdida: Subir para **4000'**. Manter proa **102** até cruzar **1000'**. Então, curvar à DIREITA direto GEVMO para espera.

Missed APCH: Climb to **4000'**. Maintain heading **102** until passing **1000'**. Then, turn RIGHT direct to GEVMO for holding.

RMK: NIL



TO THR 10 (NM)	10.1	5.1	0.5	0.0
TO ISA (DME)	11.8	6.8	2.2	1.7

NIL	RWY 10	KT	090	110	130	150	170	190
NIL	ALT	FPM	NIL					
NIL	(HGT)	FAF-MAPT	NA					

STRAIGHT-IN	CAT	A	B	C	D	E
CAT I	DA / (OCH)	<b>231' / (200')</b>				NA
	ALS/NO ALS/ RVR ALS (m)	NIL / 1200/ NIL				
CIRCLING	MDA / (OCH)	NA				
	VIS (m)					

CHANGES: ADEL DA GFA LAYOUT RDH THEL