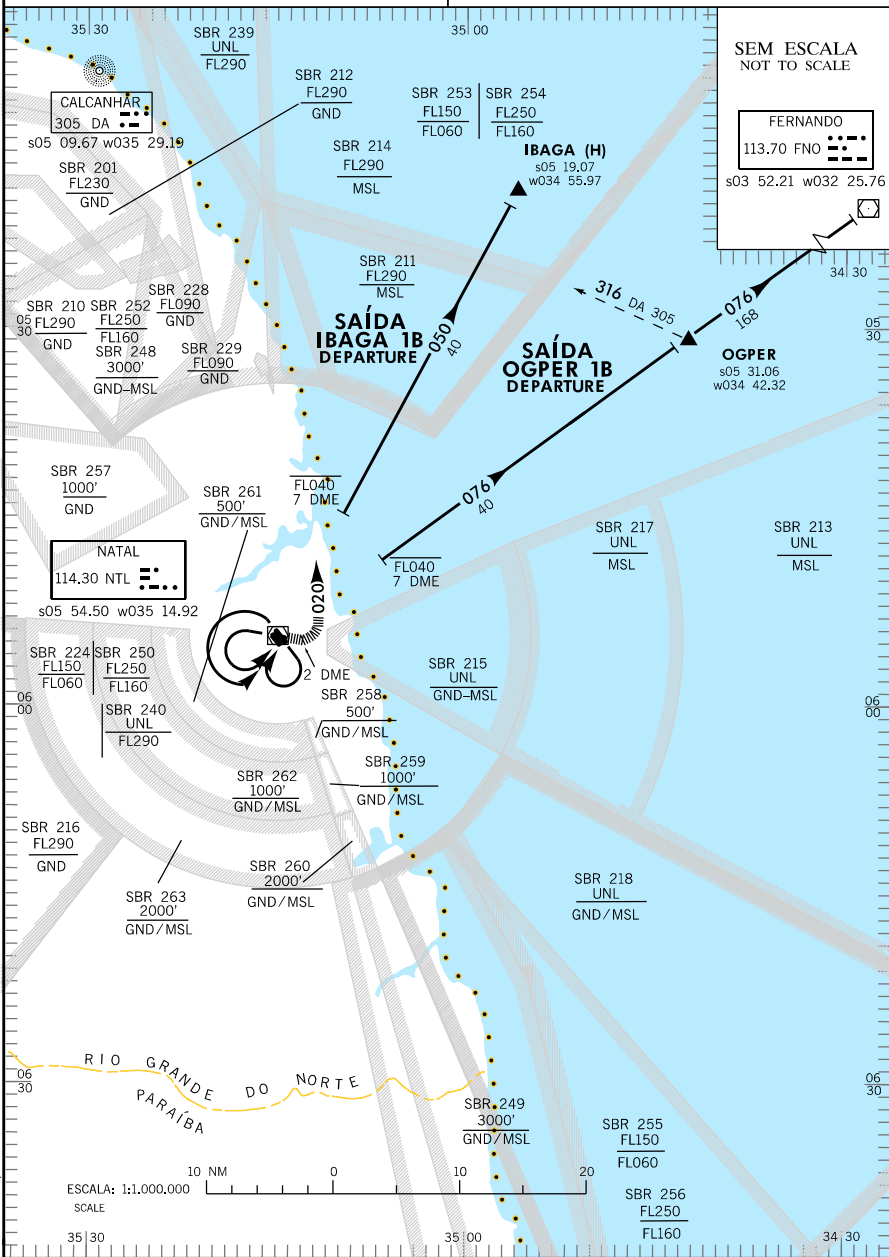


# SID - SBNT

# IBAGA 1B - OGER 1B

TWR NATAL 118.70 122.80 121.50

APP NATAL 119.30 119.65 121.50  
ACC RECIFE 128.70 134.80 121.50



MODIFICAÇÕES / CHANGES: IDENT:


**SID - SBNT**

**IBAGA 1B - OGP 1B**


ATIS	132.65
GNDC NATAL	121.90
TWR NATAL	118.70 122.80 121.50

APP NATAL	119.30 119.65 121.50
ACC RECIFE	125.15 128.70 135.25 121.50

RMK

1 - GRADIENTE MNM DE SUBIDA 3,3%  
 2 - TA 4000'.  
 3 - DEP RWY 12:  
 3.1 - INICIAR CURVA À ESQUERDA NO MAX A 2 DME.  
 3.2 - MANTER REF VISUAIS ATÉ INTERCEPTAR OU CRUZAR RDL 076. OBSERVAR ÁREA RESTRITA SBR 215.  
 4 - (H) FIXO AWY SUPERIOR.  
 5 - SAÍDA IBAGA 1B NÃO UTILIZÁVEL SE SBR 239 ESTIVER ATIVADA.  
 6 -  COM REFERÊNCIAS VISUAIS.

RMK

1 - MNM CLIMB GRADIENT 3,3%  
 2 - TA 4000'.  
 3 - DEP RWY 12:  
 3.1 - LEFT TURN AT 2 DME AT MOST.  
 3.2 - WITH VISUAL REFERENCE UNTIL INTERCEPTING OR CROSSING RDL 076. OBSERVE RESTRICTED AREA SBR 215.  
 4 - (H) HIGH WAY FIX.  
 5 - IBAGA 1B DEPARTURE NOT AVAILABLE IF SBR 239 ACTIVATED.  
 6 -  WITH VISUAL REFERENCE.

MODIFICAÇÕES/CHANGES: IDENT.