

INSTRUMENT APPROACH CHART (IAC)

SINOP / Presidente João Batista Figueiredo (SBSI)

AD ELEV: 1227'

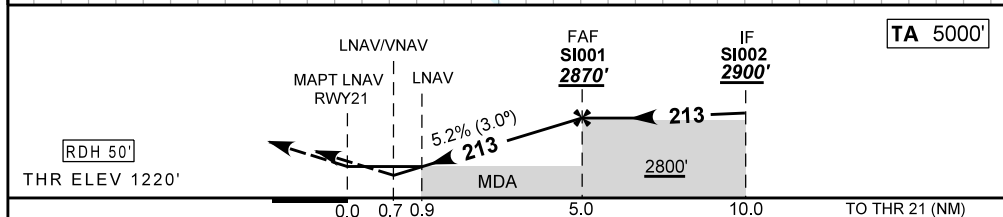
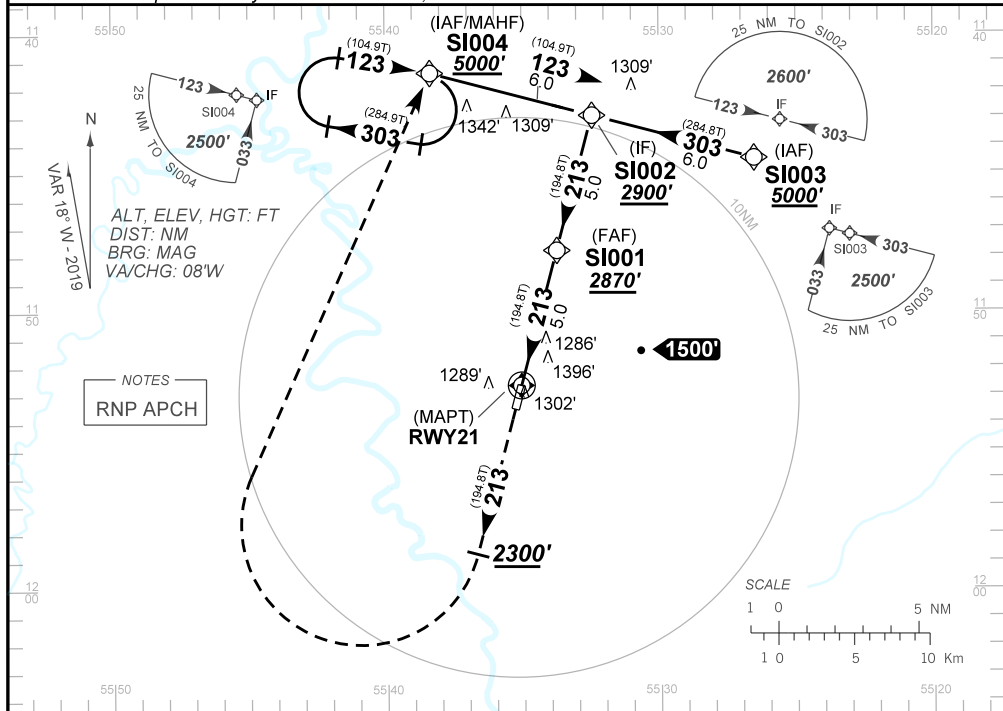
RNAV(GNSS) RWY 21

ATIS NIL	APP NIL	AFIS SINOP 130.175		GNDC NIL
N/A	FINAL CRS 213°	FAF 2870'	LNAV/VNAV DA / (OCH): 1479' (259')	LNAV MDA / (OCH): 1560' (340')

APCH Perdida: Subir para **5000'**. Manter rumo **213** até cruzar **2300'**, curvar à DIREITA direto SI004 para espera.

Missed APCH: Climb to 5000'. Maintain course 213 until passing 2300', turn RIGHT direct to SI004 for holding.

RMK: Para sistemas não compensados Baro-VNAV, LNAV/VNAV NÃO AUTORIZADO abaixo de -10°C ou acima de 51°C.
For uncompensated systems Baro-VNAV, LNAV/VNAV NOT AUTHORIZED below -10°C or above 51°C.



RWY21	0.9	2.0	3.0	4.0	SI001								
ALT	1560	1907	2226	2543	2870								
(HGT)	340	687	1006	1323	1650								

KT	090	110	130	150	170	190
FPM	480	580	690	800	900	NA
FAF-MAPT	NA					

STRAIGHT-IN	CAT	A	B	C	D	E	
	LNAV/VNAV	DA / (OCH) 1479' / (259')					NA
	LNAV	ALS/NO ALS/ RVR ALS (m) NIL /1300 / NIL					
		MDA / (OCH) 1560' / (340')					
CIRCLING	ALS/NO ALS/RVR ALS (m) NIL / 1600 / NIL					NA	
	MDA / (OCH) NA						
	VIS (m)						

CHANGES: NEW CHART.