

STANDARD DEPARTURE CHART
INSTRUMENT (SID)

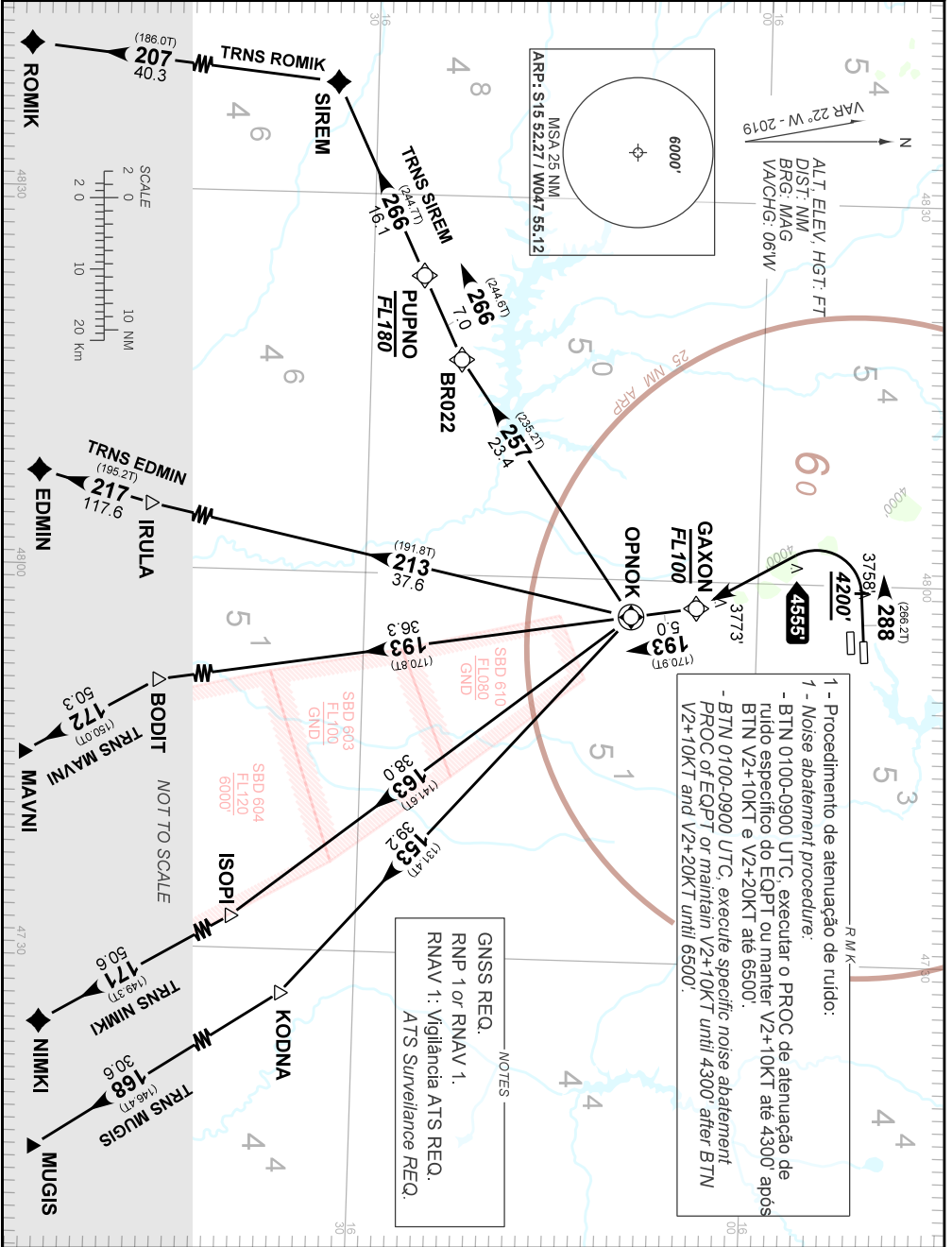
BRASÍLIA / Pres. Juscelino Kubitschek, INTL (SBBR)

RWY 29R

AD ELEV: 3498'

RNAV OPNOK 1A

TA 7000'	TWR BRASÍLIA 118.10 118.45 118.75 121.50	APP BRASÍLIA 119.50 120.65 129.15 129.60 121.50	ACC BRASÍLIA 123.75 125.05 124.30 125.55 121.50
----------	---	---	---



1 - Procedimento de atenuação de ruído:
1 - Noise abatement procedure:
- BTN 0100-0900 UTC, executar o PROC de atenuação de ruído específico do EOPRT ou manter V2+10KT até 4300' após BTN V2+10KT e V2+20KT até 6500'.
- BTN 0100-0900 UTC, execute specific noise abatement PROC of EOPRT or maintain V2+10KT until 4300' after BTN V2+10KT and V2+20KT until 6500'.

NOTES
GNSS REQ.
RNP 1 or RNAV 1.
RNAV 1: Vigilância ATS REQ.
ATS Surveillance REQ.

CHANGES: FREO.