

INSTRUMENT APPROACH  
CHART (IAC)

VITÓRIA / Eurico de Aguiar Salles (SBVT)

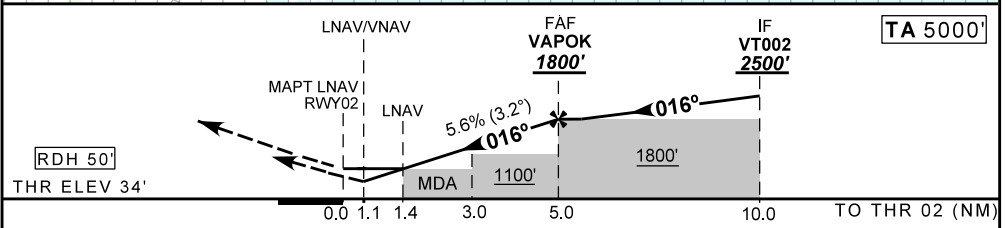
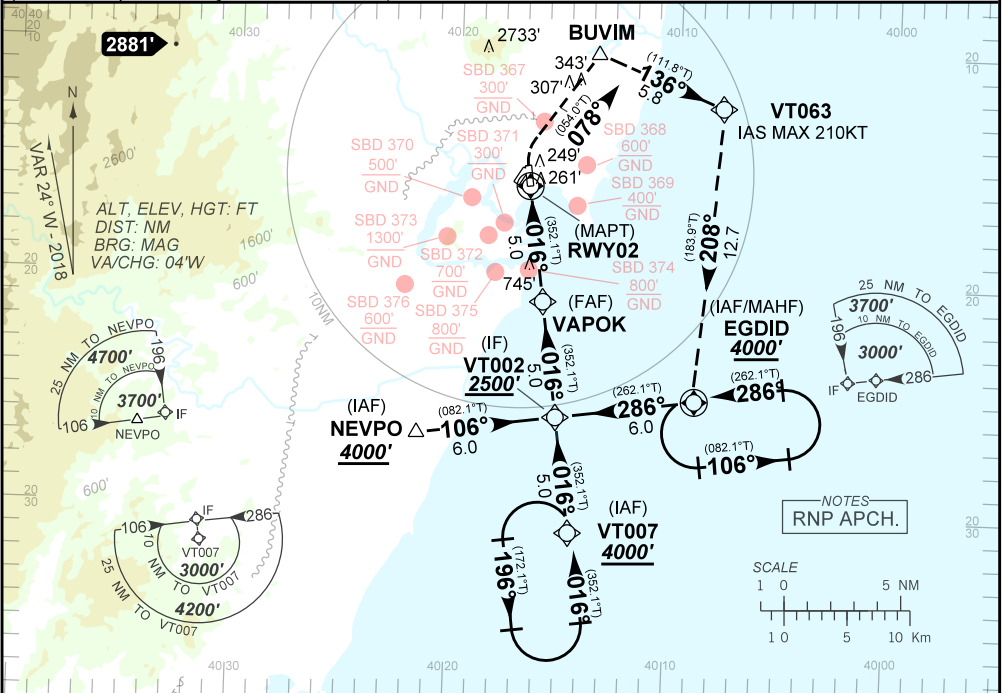
AD ELEV: 34'

RNAV(GNSS) Z RWY 02

ATIS <b>127.575</b>	APP VITÓRIA <b>119.85 121.50</b>		TWR VITÓRIA <b>118.10 121.50</b>	GND VITÓRIA <b>121.95</b>
N/A	FINAL CRS <b>016°</b>	FAF <b>1800'</b>	LNAV/VNAV DA / (OCH): <b>426' / (400')</b>	LNAV MDA / (OCH): <b>550' / (520')</b>

APCH Perdida: 1) Subir para **4000'** Curvar à DIREITA rumo **078°** para BUVIM. Então, curvar à DIREITA rumo **136°** para VT063. Após, curvar à DIREITA rumo **208°** até EGDID para espera.  
Missed APCH: 1) Climb to **4000'** Turn RIGHT course **078°** up to BUVIM. Then, turn RIGHT course **136°** up to VT063. After, turn RIGHT course **208°** up to EGDID for holding.

RMK: 1) Para sistemas não compensados Baro-VNAV, LNAV/VNAV NAO AUTORIZADO abaixo de 5°C ou acima de 40°C.  
1) For uncompensated systems Baro-VNAV, LNAV/VNAV NOT AUTHORIZED below 5°C or above 40°C.



RWY02	1.4	2.0	3.0	4.0	VAPOK	KT	090	110	130	150	170	190
ALT	550	763	1100	1443	1800	FPM	550	650	800	900	1000	NA
(HGT)	520	729	1066	1409	1766	FAF-MAPT	NA					

STRAIGHT-IN	CAT	A	B	C	D	E
LNAV/VNAV	DA / (OCH)	426' / (400')				NA
	ALS/NO ALS/ RVR ALS (m)	NIL / 1800 / NIL				
LNAV	MDA / (OCH)	550' / (520')				
	ALS/NO ALS/ RVR ALS (m)	NIL / 1800 / NIL		NIL / 2400 / NIL		
CIRCLING	MDA / (OCH)	NA				
	VIS (m)					

CHANGES: PROC. TAA