

**INSTRUMENT APPROACH  
CHART (IAC)**

**FORTALEZA / Pinto Martins, INTL (SBFZ)**

**AD ELEV: 82'**

**RNAV(GNSS) RWY 13**

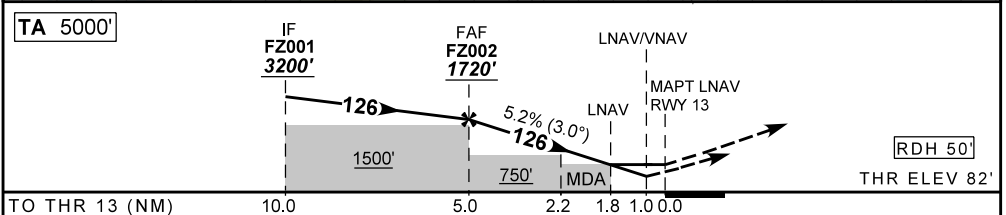
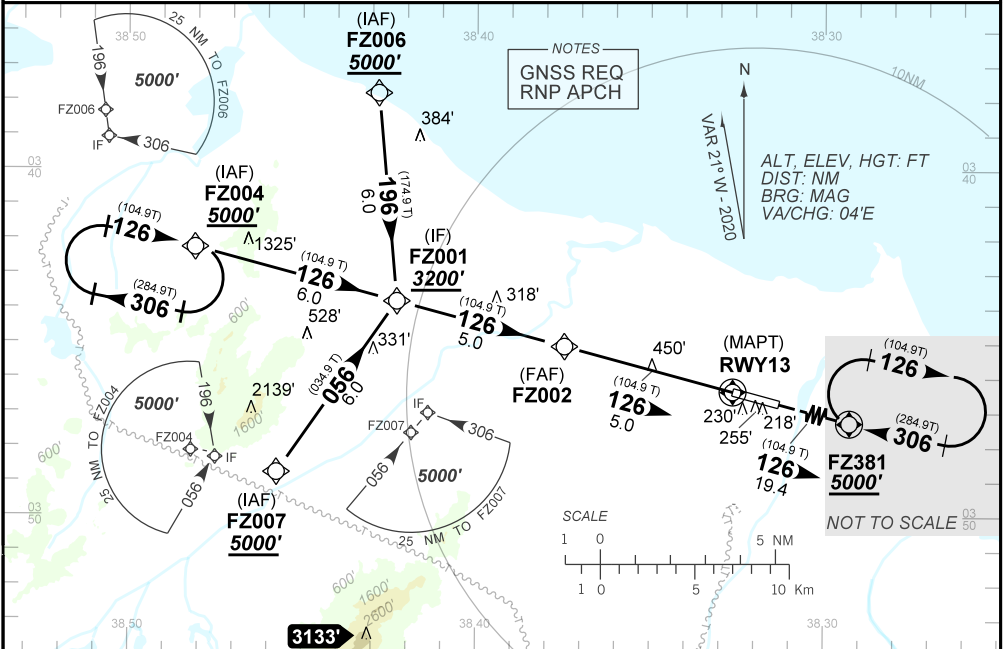
D-ATIS <b>127.70</b>	APP FORTALEZA <b>120.50 122.50 133.00 134.55</b>		TWR FORTALEZA <b>129.00 121.50</b>	GNDC FORTALEZA <b>121.95</b>
N/A	FINAL CRS <b>126°</b>	FAF: <b>1720'</b>	LNAV/VNAV DA / (OCH): <b>434' / (352')</b>	LNAV MDA / (OCH): <b>700' / (620')</b>

APCH Perdida : Subir para **5000'** no rumo **126** para espera em FZ381.

Missed APCH: Climb to **5000'** on course **126** for holding at FZ381.

RMK: 1) Para sistemas não compensados Baro-VNAV, LNAV/VNAV NÃO AUTORIZADO abaixo de -10°C ou acima de 50°C.

1) For uncompensated systems Baro-VNAV, LNAV/VNAV NOT AUTHORIZED below -10°C or above 50°C.



	FZ002	4.0	3.0	2.0	1.8	RWY13		KT	090	110	130	150	170	190
		1720	1400	1085	770	700	ALT	FPM	500	600	700	800	900	1000
		1638	1318	1003	688	618	(HGT)	FAF-MAPT	NA					

STRAIGHT-IN	CAT	A	B	C	D	E
	DA / (OCH)	434' / (352')				NA
LNAV/VNAV	ALS/NO ALS/ RVR ALS (m)	NIL / 1600 / NIL				NA
	MDA / (OCH)	700' / (620')				
LNAV	ALS/NO ALS/ RVR ALS (m)	NIL / 1600 / NIL		NIL / 2800 / NIL		
	MDA / (OCH)	NA				
CIRCLING	MDA / (OCH)	NA				
	VIS (m)	NA				

CHANGES: NEW CHART.