

**INSTRUMENT APPROACH
CHART (IAC)**

ITUMBIARA / Hidrelétrica de Itumbiara (SBIT)

AD ELEV: 1631'

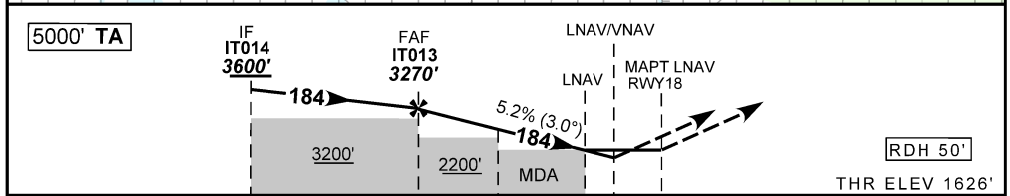
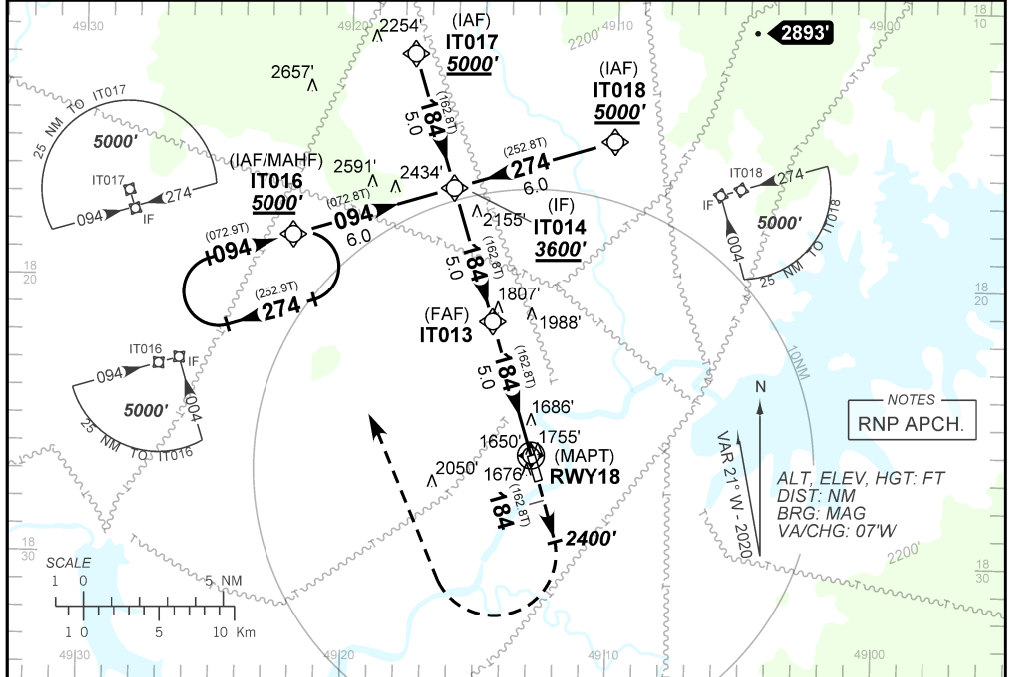
RNAV(GNSS) Y RWY 18

D-ATIS NIL	APP NIL	AFIS ITUMBIARA 130.30		GND NIL
---------------	------------	--------------------------	--	------------

N/A	FINAL CRS 134°	FAF: 3270'	LNAV/VNAV DA / (OCH): 1906' / (280')	LNAV MDA / (OCH): 2010' / (380')
-----	-------------------	---------------	---	-------------------------------------

APCH Perdida: Subir para **5000'**, no rumo **184**. Ao passar **2400'**, curvar à DIREITA direto IT016 para espera.
Missed APCH: Climb to **5000'**, course **184**. After passing **2400'**, turn RIGHT direct IT016 for holding.

RMK: ACFT não compensadas BARO-VNAV, LNAV/VNAV NÃO AUTORIZADO abaixo de 0°C.
For uncompensated systems BARO-VNAV, LNAV/VNAV NOT AUTHORIZED below 0°C.



TO THR 18 (NM) 10.0 5.0 2.0 1.0 0.7 0.0

	IT013	4.0	3.0	2.0	1.0	RWY18	KT	090	110	130	150	170	190
		3270	2955	2636	2318	2010	FPM	500	600	700	800		NA
		1639	1324	1005	687	380	FAF-MAPT						NA

STRAIGHT-IN	CAT	A	B	C	D	E
LNAV/VNAV	DA / (OCH)	1906' / (280')			NA	
	ALS/NO ALS/ RVR ALS (m)	NIL / 1300 / NIL				
LNAV	MDA / (OCH)	2010' / (380')			NA	
	ALS/NO ALS/ RVR ALS (m)	NIL / 1600 / NIL				
CIRCLING	MDA / (OCH)	NA				
	VIS (m)					

CHANGES: NEW CHART