

**IAC - SBSC**

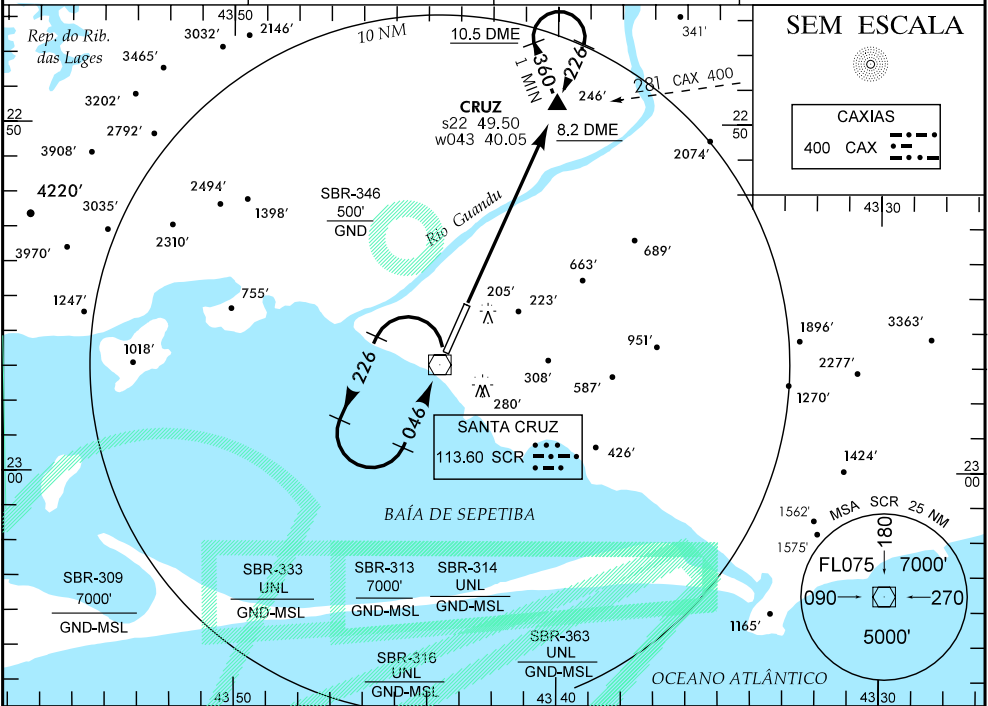
WGS-84

ATIS  
NIL

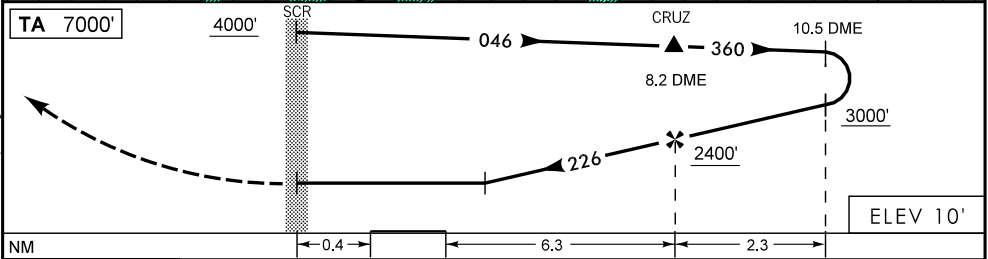
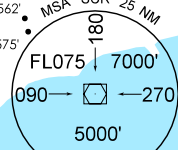
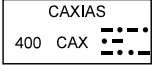
APP SANTA CRUZ  
132.50 133.70 121.50

TWR SANTA CRUZ  
118.80 122.90 121.50

GNDC SANTA CRUZ  
121.80



SEM ESCALA



APROXIMAÇÃO PERDIDA

SUBIR PARA 4000' NA RDL 226.

RMK: 1) POUSO RWY 05 CIRCULE SETOR W DO AERÓDROMO.

C	POUSO DIRETO RWY 23	IFR OPS DIURNA / NOTURNA	PARA CIRCULAR (RMK)			
A	VOR / DME		CAT	MDA	TETO	VIS
T	MDA 510'	TETO 500'	A	520'	600'	1600 M
A	VIS	B	2400 M			
B	1600 M	C	NA			
C	2000 M	D				
D	NA	E				

RAZÃO DE DESCIDA NA APROXIMAÇÃO FINAL						
KT	090	110	120	130	140	160
FPM	550	650	750	800	900	1000