

INSTRUMENT APPROACH  
CHART (IAC)

PATO BRANCO / Juvenal Loureiro Cardoso (SBPO)

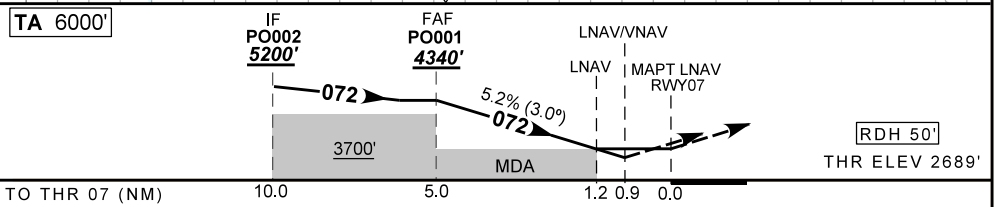
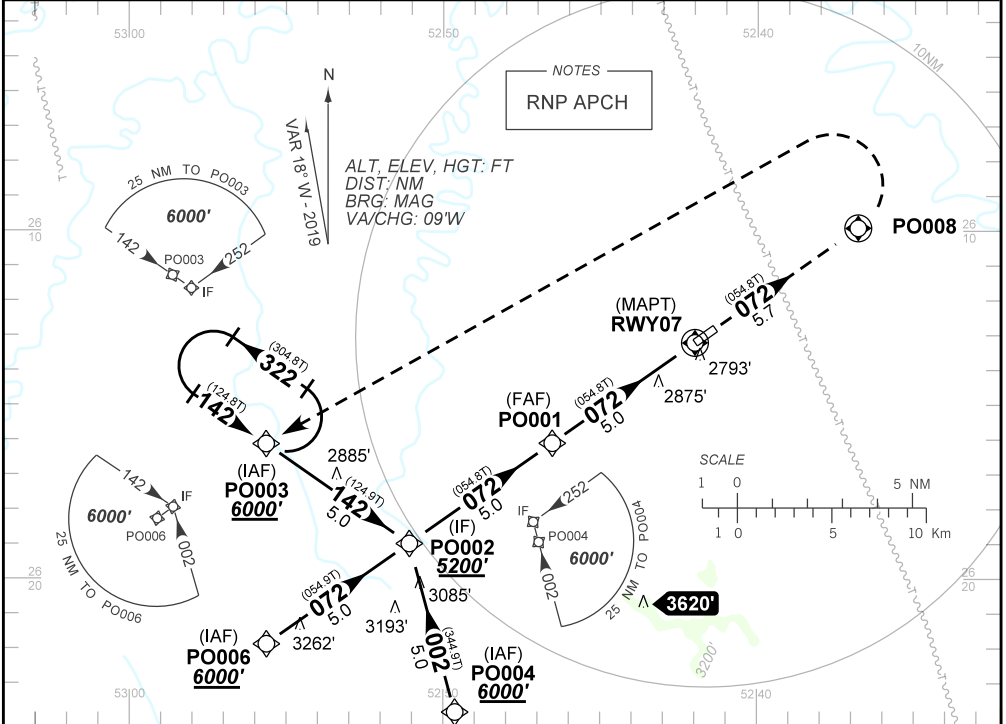
RNAV(GNSS) RWY 07

AD ELEV: 2700'

ATIS NIL	APP NIL	AFIS PATO BRANCO 130.80	GND NIL
N/A	FINAL CRS 072°	FAF 4340'	LNAV/VNAV DA / (OCH): 3015' / (326')
		LNAV MDA / (OCH): 3130' / (450')	

APCH Perdida: Subir para **6000'**. Manter rumo **072** até PO008. Após, curvar à ESQUERDA direto PO003 para espera.  
Missed APCH: Climb to **6000'**. Maintain course **072** up to PO008. After, turn LEFT direct to PO003 for holding.

RMK: Para sistemas não compensados Baro-VNAV, LNAV/VNAV NÃO AUTORIZADO abaixo de -10°C ou acima de 50°C.  
For uncompensated systems Baro-VNAV, LNAV/VNAV NOT AUTHORIZED below -10°C or above 50°C.



TO THR 07 (NM)	10.0	5.0	1.2	0.9	0.0								
	PO001	4.0	3.0	2.0	1.2	RWY07	KT	090	110	130	150	170	190
	4340	4012	3700	3376	3130	ALT	FPM	500	600	700	800		NA
	1651	1323	1011	687	450	(HGT)	FAF-MAPT						NA

STRAIGHT-IN	CAT	A	B	C	D	E
LNAV/VNAV	DA / (OCH)	3015' / (326')				NA
	ALS/NO ALS/ RVR ALS (m)	NIL / 1600 / NIL			NIL / 1500 / NIL	
LNAV	MDA / (OCH)	3130' / (450')				NA
	ALS/NO ALS/ RVR ALS (m)	NIL / 1600 / NIL			NIL / 2100 / NIL	
CIRCLING	MDA / (OCH)	NA				
	VIS (m)					

CHANGES: NEW CHART.

**INTENCIONALMENTE EM BRANCO**  
INTENTIONALLY LEFT BLANK