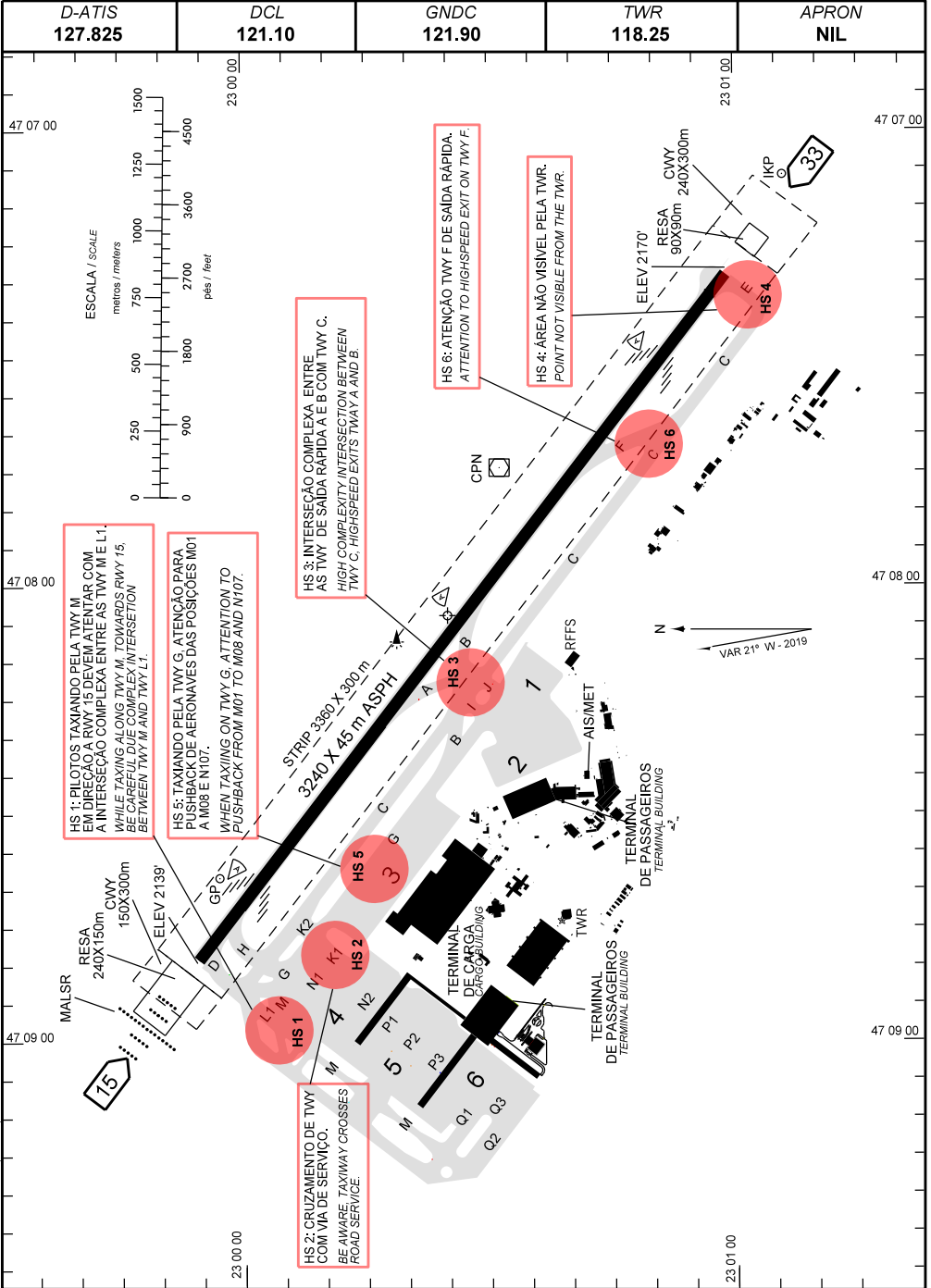


AD ELEV: 2170'

ARP S23 00 25 W047 08 04



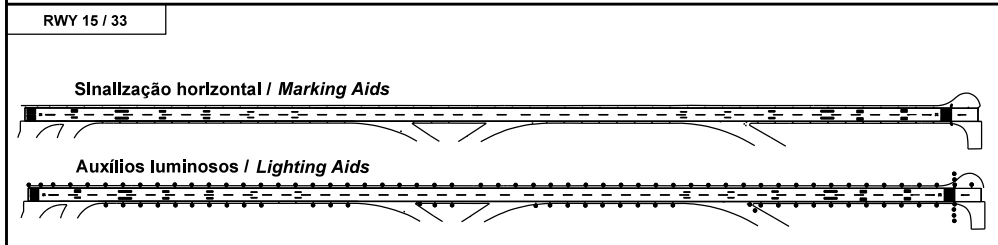
CHANGES: HOT SPOT-RESA, TWY.

ADC - SBKP: INFORMAÇÕES COMPLEMENTARES / COMPLEMENTARY INFORMATION

CARACTERÍSTICAS FÍSICAS / PHYSICAL CHARACTERISTICS												
PISTA RUNWAY				DIMENSÕES(m) DIMENSIONS(m)					PCN	TIPO DE SUPERFÍCIE SURFACE KIND		
RWY	BRG MAG	Tip Type	RCD	RWY	SWY	CWY	STRIP	RESA	RWY	RWY	SWY	
a	b	c	d	e	f	g	h	i	j	k	l	
15	149	PA-1	4E	3240x45		240x300	3360 x 300	240X150	56/F/B/X/T	ASPH		
33	329	NPA	4E			150x300		90X90				

DISTÂNCIAS DECLARADAS, AUXÍLIOS VISUAIS E COORDENADAS DAS CABECEIRAS DECLARED DISTANCES, VISUAL AIDS AND THRESHOLD COORDINATES							
RWY	TORA(m)	TODA(m)	ASDA(m)	LDA(m)	AUXÍLIOS AIDS	ALTURA GEOIDAL(m) GEOID HEIGHT(m)	COORDENADAS COORDINATES
15	3150	3390	3150	3150	MALS R / PAPI	- 4,36	S22 59 55 W047 08 49
33	3240	3390	3240	3150	PAPI	- 4,26	S23 00 57 W047 07 22

SERVIÇO DE SALVAMENTO E CONTRAINCÊNDIO / RESCUE AND FIRE FIGHTING SERVICE: RFFS REQ - 10



RMK:

- 1 - MEHT: PAPI - RWY15: 62FT
MEHT: PAPI - RWY33: 63FT
- 2 - HIRL: RWY15/33
- 3 - PROIBIDO GIRO DE 180° SOBRE A PISTA.
ACFT ARE PROHIBITED TO EXECUTE A 180° TURN ON THE RWY.
- 4 - GROOVED : RWY 15/33

CHANGES: HOT SPOT, RESA, TWY.