

**INSTRUMENT APPROACH  
CHART (IAC)**

**GAVIÃO PEIXOTO / EMBRAER - Unidade Gavião Peixoto (SBGP)**

**CARTA DE USO EXCLUSIVO  
ENSAIO EM VOO**

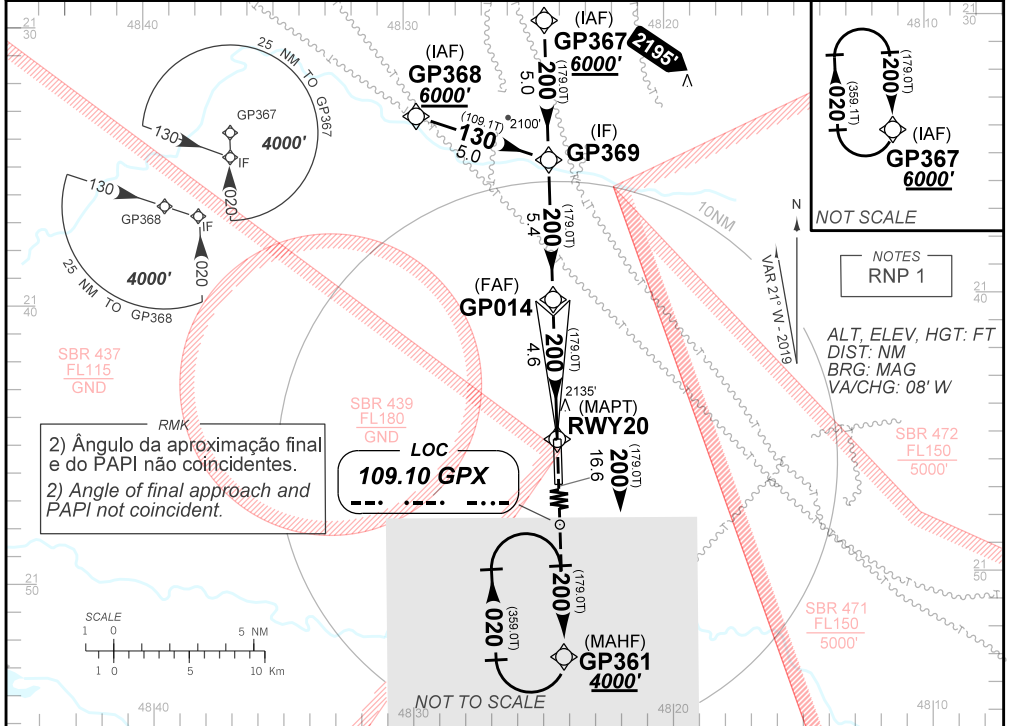
**ILS Y RWY 20**

**AD ELEV: 1998'**

ATIS NIL	APP NIL	AFIS GAVIÃO PEIXOTO 118.95		GNDC GAVIÃO PEIXOTO 121.80
LOC GPX 109.10 MHz	FINAL CRS 200°	FAF: 5000'	CAT I DA / (OCH): 2321' (324')	N/A

APCH Perdida: Subir para **4000'**. Manter rumo **200** até GP361 para espera.  
Missed APCH: Climb to **4000'**. Maintain course **200** up to GP361 for holding.

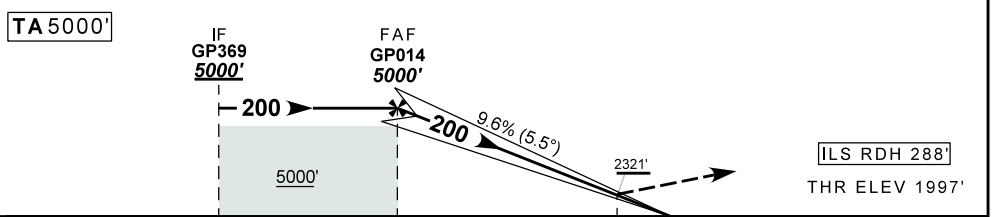
RMK: 1) Procedimento de uso exclusivo da EMBRAER para ensaio em voo. Compulsório voo diurno sob VFR.  
1) Procedure of exclusive use by EMBRAER for flight test. Compulsory daylight flight under VFR.



RMK  
2) Ângulo da aproximação final e do PAPI não coincidentes.  
2) Angle of final approach and PAPI not coincident.

LOC  
109.10 GPX

NOTES  
RNP 1  
ALT, ELEV, HGT: FT  
DIST: NM  
BRG: MAG  
VA/CHG: 08' W



TO THR 20 (NM)	10.0	4.6	0.5			
	NIL	RWY20 ALT	KT FPM	NIL	NIL	NIL
	NIL	(HGT)	FAF-MAPT	NIL	NIL	NIL

STRAIGHT-IN	CAT	A	B	C	D	E
CAT I	DA / (OCH)	2321' / (324')				
	ALS/NO ALS/ RVR ALS (m)	NIL / 1600 / NIL				
CIRCLING	MDA / (OCH)	NA				
	VIS (m)	NA				

CHANGES: NEW CHART.