

STANDARD DEPARTURE CHART
INSTRUMENT (SID)

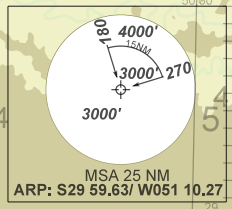
PORTO ALEGRE / Salgado Filho, INTL (SBPA)

RWY 11
RNAV PENSO 1A

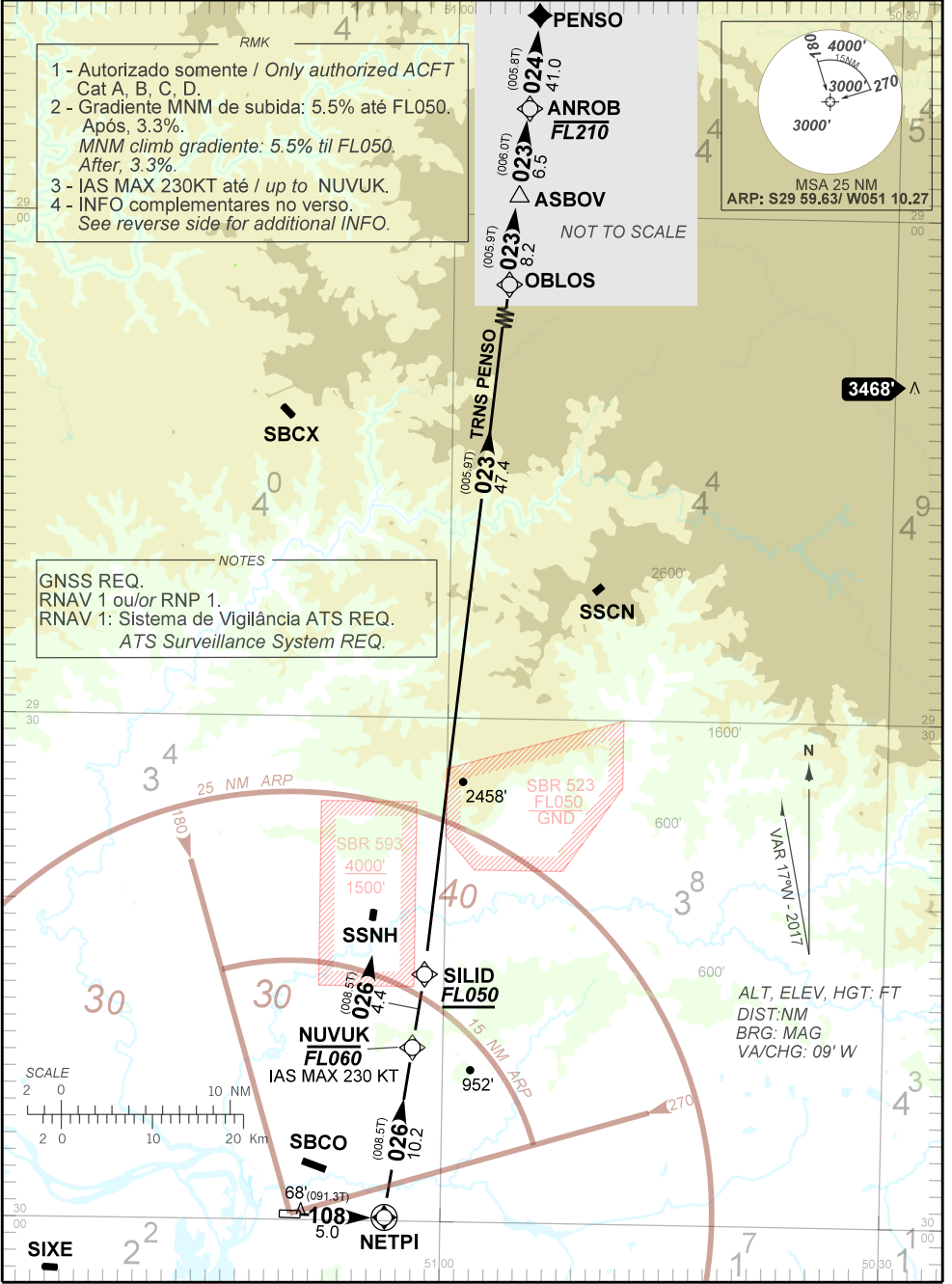
AD ELEV: 12'

TA 4000'	TWR PALEGRE 118.10 121.50	APP PALEGRE 119.00 120.10 120.55 128.90 121.50	ACC CURITIBA 126.10 127.50 121.50
-----------------	--	---	--

- 1 - Autorizado somente / Only authorized ACFT
Cat A, B, C, D.
2 - Gradiente MNM de subida: 5.5% até FLO50.
Após, 3.3%.
MNM climb gradient: 5.5% til FLO50.
After, 3.3%.
3 - IAS MAX 230KT até / up to NUVUK.
4 - INFO complementares no verso.
See reverse side for additional INFO.



GNSS REQ.
RNAV 1 ou/ou RNP 1.
RNAV 1: Sistema de Vigilância ATS REQ.
ATS Surveillance System REQ.



ALT, ELEV, HGT: FT
DIST: NM
BRG: MAG
VA/CHG: 09' W

CHANGES: RMK.

RMK

5 - Gradiente superior a 3.3% devido à restrição de espaço aéreo.

Climb gradient greater than 3.3% due to airspace restrictions.

6 - Obstáculos próximos não considerados para o cálculo do gradiente de subida (PDG):

Close-in obstacles not taken into account on climb gradient calculation (PDG):

Árvores / *Trees*: a partir de / *from* THR29, AZM 160, DIST 150m, ELEV 68'.