

**INSTRUMENT APPROACH
CHART (IAC)**

SÃO PAULO / Guarulhos - Gov. André Franco Montoro, INTL (SBGR)

AD ELEV: 2461'

ILS G ou / or LOC G RWY 27R

D-ATIS 127.75	APP SÃO PAULO 129.75 119.15 129.00 123.25 123.90 120.85 124.70 121.50	TWR GUARULHOS 118.40 132.75 135.20 121.50	GNDC GUARULHOS 121.70 126.90
-------------------------	---	---	--

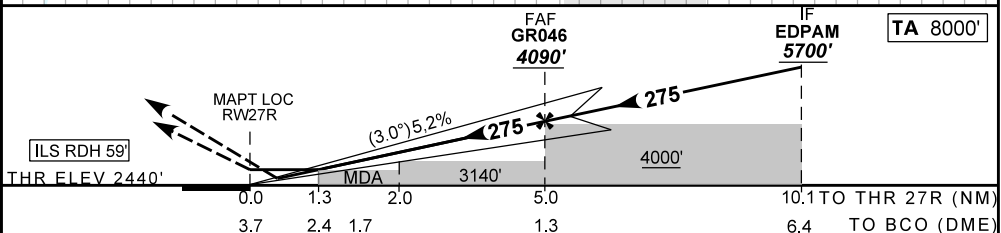
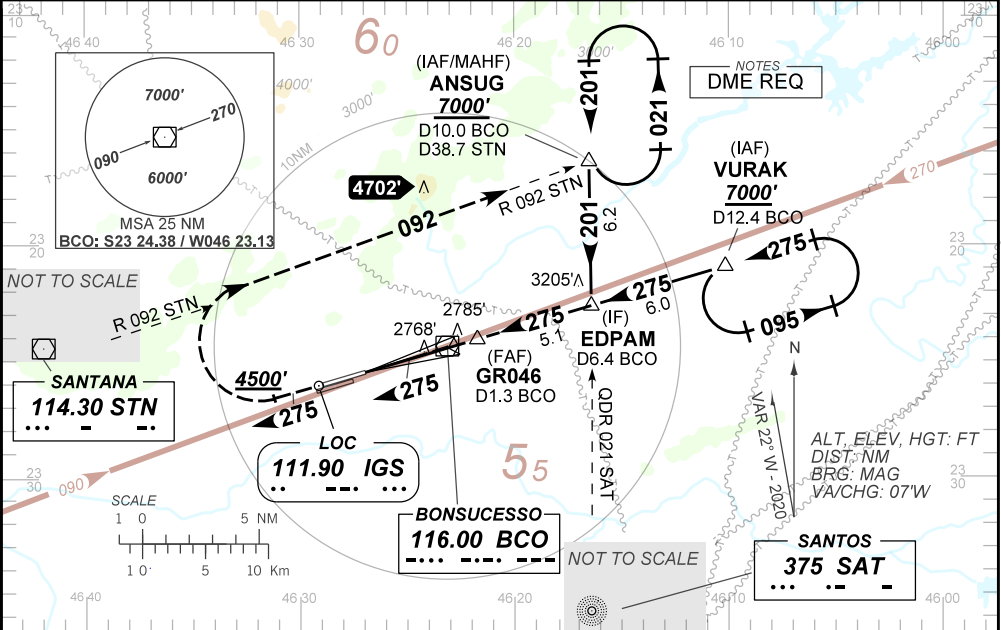
LOC IGS 111.90	FINAL CRS 275°	FAF 4090'	CAT I DA / (OCH): 2648' / (208')	LOC ONLY MDA / (OCH): 3020' / (580')
--------------------------	--------------------------	---------------------	--	--

APCH perdida: Subir para **7000'**, gradiente MNM 5%. Manter rumo **275** até cruzar **4500'**. Após, curvar à DIREITA RDL **092** STN para espera em ANSUG.

Missed APCH: Climb to **7000'**, MNM gradient 5%. Maintain course **275** until passing **4500'**. Then, turn RIGHT **092** STN RDL until ANSUG for holding.

RMK: 1) (*) VIS RVR ALS 550m para aproximação utilizando Diretor de Voo, Piloto Automático ou Head-Up Display (HUD).

RMK: 1) (*) VIS RVR ALS 550m for approach using a Flight Director, Autopilot, or Head-Up Display (HUD).



RWY 27R	1.3	2.0	3.0	4.0	FAF	KT	090	110	130	150	170	190
ALT (HGT)	2913	3136	3465	3773	4100	FPM	500	600	700	800	900	1000
	473	696	1015	1333	1660	FAF-MAPT	NA					

STRAIGHT-IN	CAT	A	B	C	D	E	
	DA / (OCH)	2648 / (208)					NA
CAT I	ALS/NO ALS/ RVR ALS (m)	800 / 1200 / 700 (*)					
LOC	MDA / (OCH)	3020 / (580)					
	ALS/NO ALS/RVR ALS (m)	1900 / 1600 / NIL			1900 / 2600 / NIL		
CIRCLING	MDA / (OCH)	NA					
	VIS (m)						

CHANGES: APPROX. PERIOD