

**INSTRUMENT APPROACH
CHART (IAC)**

ORIXIMINÁ / Trombetas (SBT)

AD ELEV: 172'

RNAV(GNSS) RWY 09

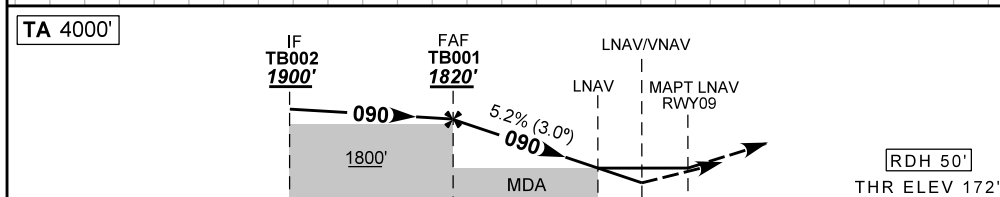
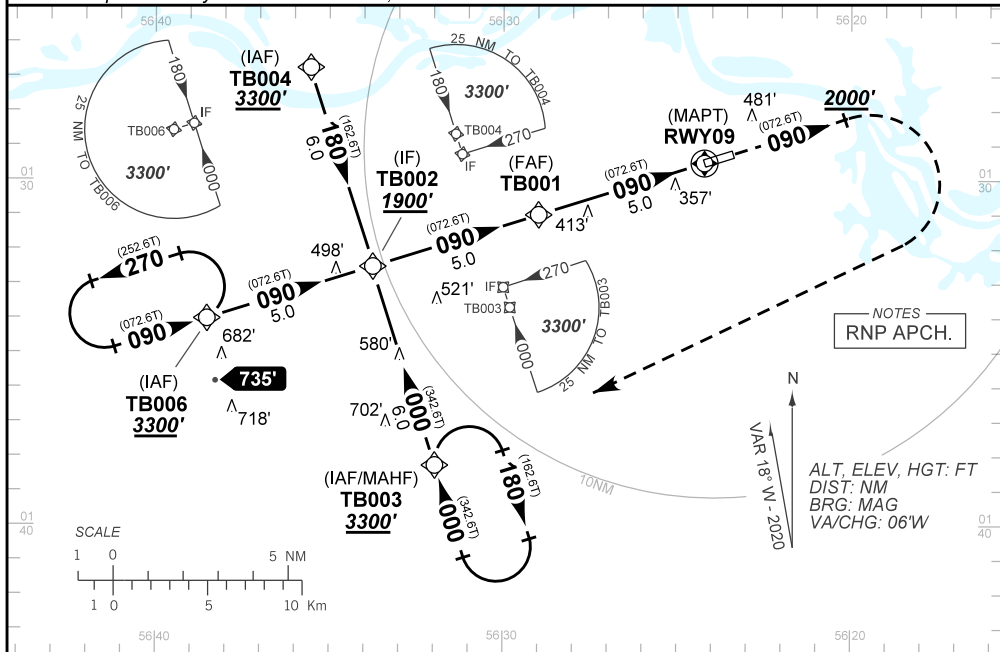
ATIS NIL	APP NIL	AFIS TROMBETAS 131.60	GNDC NIL
N/A	FINAL CRS 090°	FAF 1820'	LNAV MDA / (OCH): 660' (490')
		LNAV/VNAV DA / (OCH): 508' / (336')	

APCH Perdida: Subir para **3300'**. Manter rumo **090** até passar **2000'**. Então, curvar à DIREITA direto TB003 para espera.

Missed APCH: Climb to **3300'**. Maintain course **090** until passing **2000'**. Then, turn RIGHT direct to TB003 for holding.

RMK: Para sistemas não compensados BARO-VNAV, LNAV/VNAV NÃO AUTORIZADO abaixo de 0°C ou acima de 50°C.

For uncompensated systems BARO-VNAV, LNAV/VNAV NOT AUTHORIZED below 0°C or above 50°C.



TO THR 09 (NM)	10.0	5.0	1.4	0.9	0.0
----------------	------	-----	-----	-----	-----

	TB001	4.0	3.0	2.0	1.4	RWY09	KT	090	110	130	150	170	190
	1820	1496	1177	859	660	ALT	FPM	500	600	700	800	NA	NA
	1648	1324	1005	687	490	(HGT)	FAF-MAPT	NA					

STRAIGHT-IN	CAT	A	B	C	D	E
	DA / OCH	508' / (336')				NA
LNAV/VNAV	ALS/NO ALS/ RVR ALS (m)	NIL / 1600 / NIL				
	MDA / OCH	660' / (490')				
LNAV	ALS/NO ALS/ RVR ALS (m)	NIL / 1600 / NIL		NIL / 2300 / NIL		
	MDA / OCH	NA				
CIRCLING	MDA / OCH	NA				
	VIS (m)	NA				