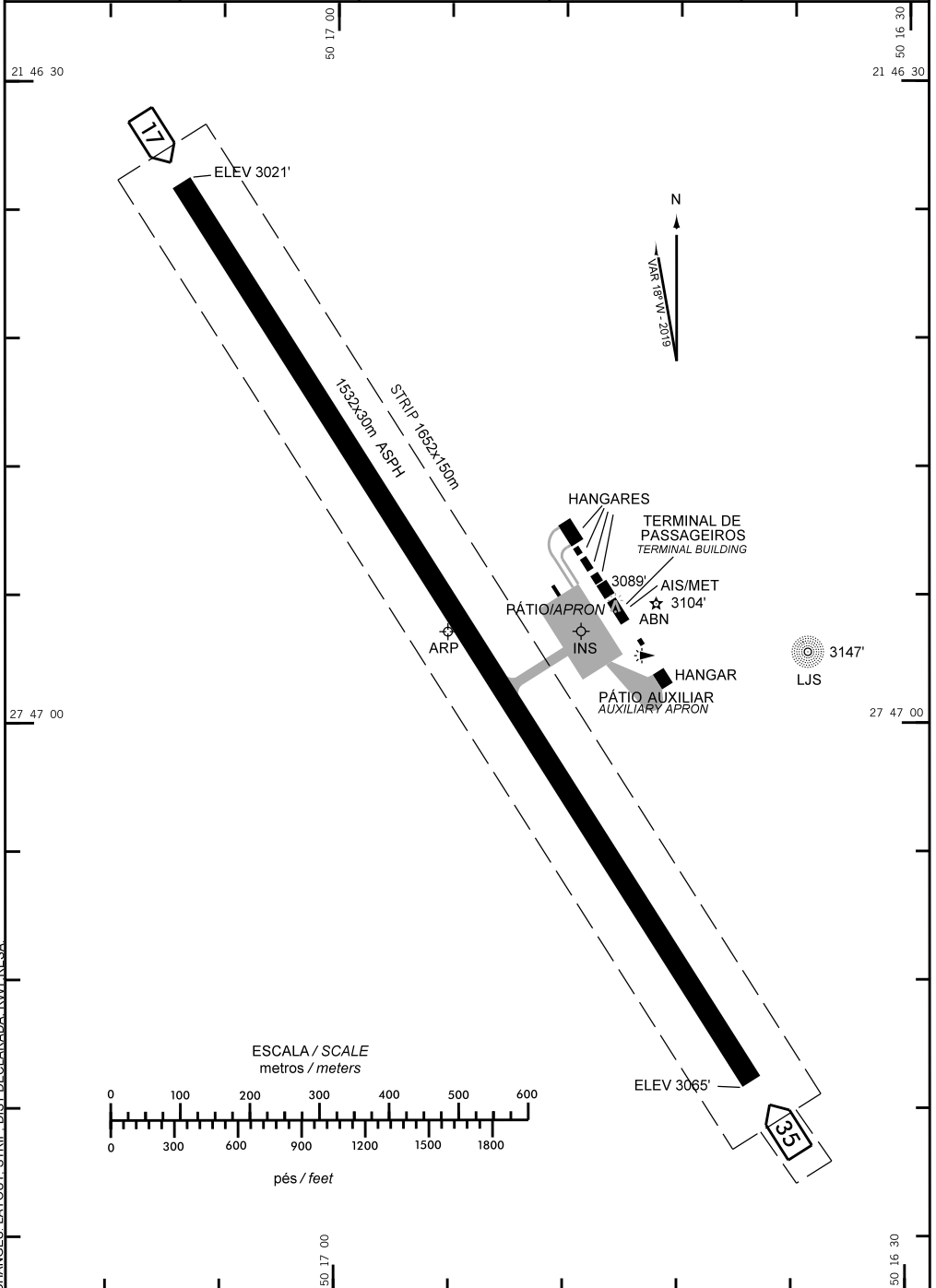


AD ELEV: 3064'

ARP S27 46 56 W050 16 54

ATIS NIL	CLRD NIL	GNDC NIL	AFIS 132.15	APRON NIL
-------------	-------------	-------------	----------------	--------------



CHANGES: LAYOUT, STRIP, DIST DECLARADA, RWY, RESA

ADC - SBLJ: INFORMAÇÕES COMPLEMENTARES/ *COMPLEMENTARY INFORMATION*

CARACTERÍSTICAS FÍSICAS / PHYSICAL CHARACTERISTICS

PISTA RUNWAY				DIMENSÕES(m) DIMENSIONS(m)					PCN	TIPO DE SUPERFÍCIE SURFACE KIND	
RWY	BRG MAG	Tipo Type	RCD	RWY	SWY	CWY	STRIP	RESA	RWY	RWY	SWY
a	b	c	d	e	f	g	h	i	j	k	l
17	165	NPA	3	1532X30			1652 X 150		17/F/C/Y/U	ASPH	
35	345	NPA	3				90X60				

DISTÂNCIAS DECLARADAS, AUXÍLIOS VISUAIS E COORDENADAS DAS CABECEIRAS
DECLARED DISTANCES, VISUAL AIDS AND THRESHOLD COORDINATES

RWY	TORA(m)	TODA(m)	ASDA(m)	LDA(m)	AUXÍLIOS / AIDS		ALTURA GEOIDAL(m) GEOID HEIGHT(m)	COORDENADAS COORDINATES
17	1532	1532	1532	1532			5,66	S27 46 35 W050 17 08
35	1442	1532	1442	1442			5,66	S27 47 17 W050 16 38

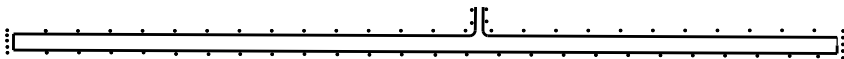
SERVIÇO DE SALVAMENTO E CONTRAINCÊNDIO / RESCUE AND FIRE FIGHTING SERVICE: RFFS REQ - 3

RWY 17 / 35

Sinalização horizontal / *Marking Aids*



Auxílios luminosos / *Lighting Aids*



RMK: 1) AFIS HR SER MON TIL FRI 1500-2100 SUN 1800-2100.

CHANGES: LAYOUT, STRIP, DIST DECLARADA, RWY, RESA.