

**INSTRUMENT APPROACH  
CHART (IAC)**

**SALVADOR / Deputado Luís Eduardo Magalhães, INTL (SBSV)**

**AD ELEV: 63'**

**RNAV(GNSS) RWY 28**

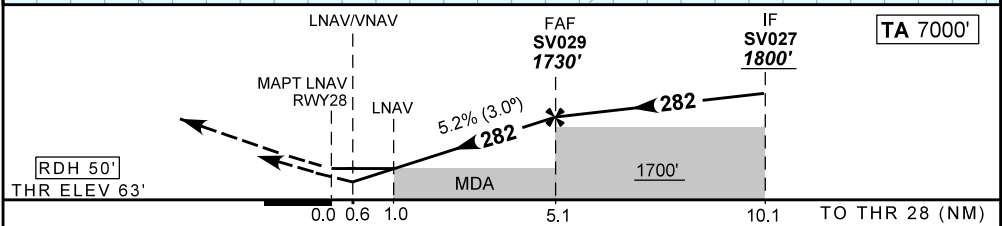
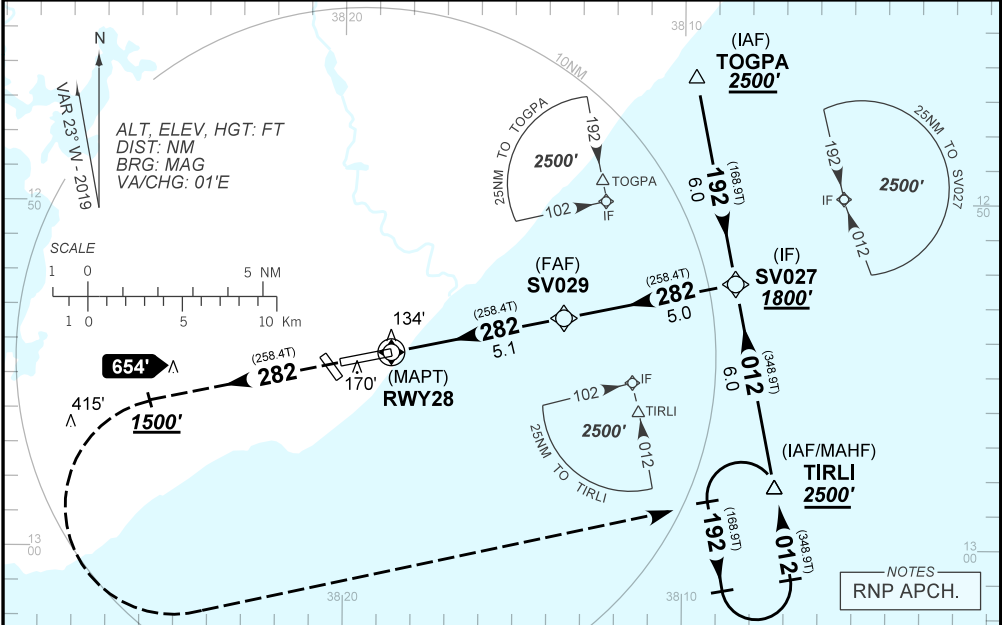
D-ATIS <b>127.75</b>	APP SALVADOR <b>119.35 119.80 120.80 129.45</b>	TWR SALVADOR <b>118.30 118.60 118.95 121.10 121.50</b>	GNDC SALVADOR <b>121.90</b>
N/A	FINAL CRS <b>282°</b>	FAF: <b>1730'</b>	LNNAV/VNAV DA / (OCH): <b>313' / (250')</b>
			LNNAV MDA / (OCH): <b>420' / (360')</b>

APCH Perdida: Subir para **2500'**. Manter rumo **282** até cruzar **1500'**. Após, curvar à ESQUERDA direto TIRLI para espera.

Missed APCH: Climb to **2500'**. Maintain course **282** until passing **1500'**. After, turn LEFT direct to TIRLI for holding.

RMK: Para sistemas não compensados Baro-VNAV, LNAV/VNAV NÃO AUTORIZADO abaixo de 0°C ou acima de 46°C.

For uncompensated systems Baro-VNAV, LNAV/VNAV NOT AUTHORIZED below 0°C or above 46°C.



RWY28	1.0	2.0	3.0	4.0	SV029		KT	090	110	130	150	170	190
ALT	420	753	1071	1390	1730		FPM	500	600	700	800	900	NA
(HGT)	360	690	1008	1327	1667		FAF-MAPT			NA			

STRAIGHT-IN	CAT	A	B	C	D	E
	DA / (OCH)		313' / (250')			
LNNAV/VNAV	ALS/NO ALS/ RVR ALS (m)		NIL / 1300 / NIL			NA
	MDA / (OCH)		420' / (360')			
LNAV	ALS/NO ALS/ RVR ALS (m)		NIL / 1600 / NIL			
	MDA / (OCH)		NA			
CIRCLING	MDA / (OCH)		NA			
	VIS (m)					

CHANGES: ADEL DA LAYOUT, MDA, THEL