

INSTRUMENT APPROACH
CHART (IAC)

Vitória da Conquista / Glauber de Andrade Rocha (SBVC)

RNAV(GNSS) RWY 15

AD ELEV: 2934'

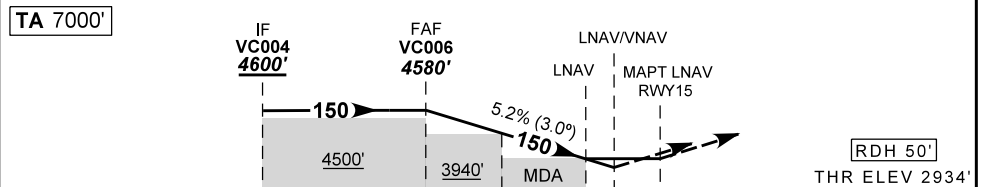
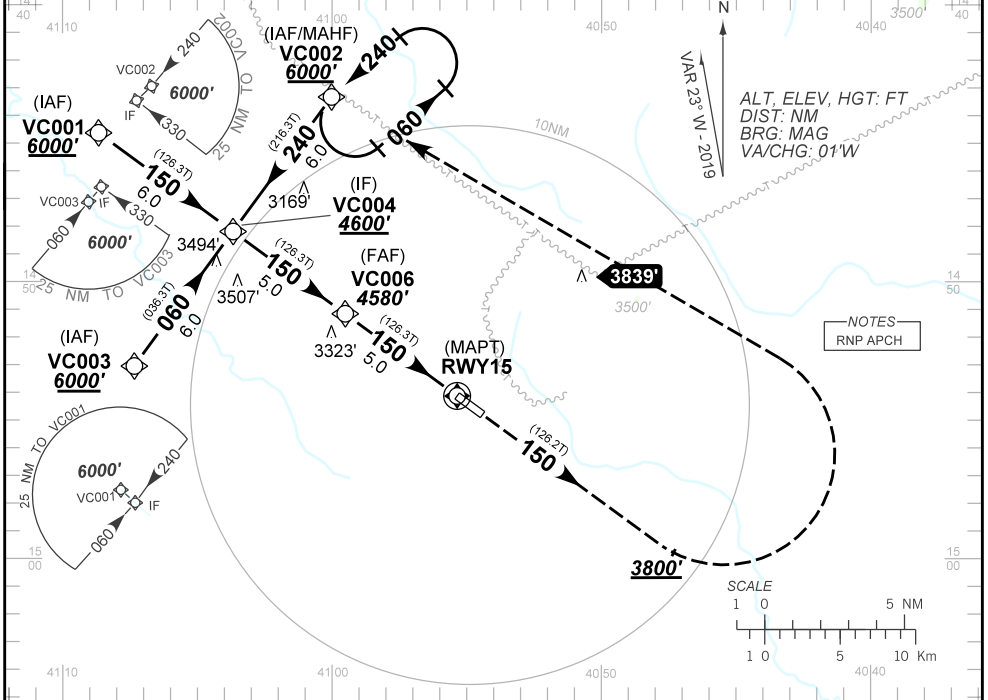
ATIS NIL	APP NIL	AFIS CONQUISTA 130.85	GND NIL
N/A	FINAL CRS 150°	FAF 4580'	LNAV MDA / (OCH): 3250' / (310')
		LNAV/VNAV DA / (OCH): 3184' / (250')	

APCH Perdida: Subir para **6000'** no rumo **150**. Após **3300'**, curvar à ESQUERDA direto VC002 para espera.

Missed APCH: Climb to **6000'** on course **150**. After **3300'**, turn LEFT direct to VC002 for holding.

RMK: 1) Para sistemas não compensados Baro-VNAV, LNAV/VNAV NÃO AUTORIZADO abaixo de 0°C.

1) For uncompensated systems Baro-VNAV, LNAV/VNAV NOT AUTHORIZED below 0°C.



TO THR 15 (NM)	10.0	5.0	3.0	1.3	0.8	0.0							
VC006	4.0	3.0	2.0	1.0	RWY15	KT	090	110	130	150	170	190	
	4580	4532	3940	3620	3300	ALT	FPM	500	600	700	800	900	NA
	1646	1598	1006	686	366	(HGT)	FAF-MAPT	NA					

STRAIGHT-IN	CAT	A	B	C	D	E
	DA / OCH	3184' / (250')			NA	
LNAV/VNAV	ALS/NO ALS/ RVR ALS (m)	NIL / 1300 / NIL			NA	
	MDA / OCH	3250' / (310')			NA	
LNAV	ALS/NO ALS/RVR ALS (m)	NIL / 1400 / NIL			NA	
	MDA / OCH	NA				
CIRCLING	VIS (m)	NA				

CHANGES-NEW CHART.