

INSTRUMENT APPROACH
CHART (IAC)

RIO DE JANEIRO / Galeão - Antônio Carlos Jobim, INTL (SBGL)

AD ELEV: 28'

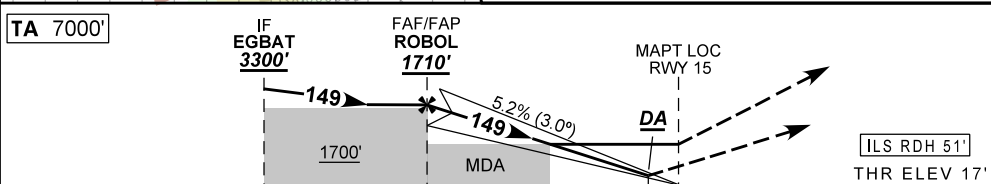
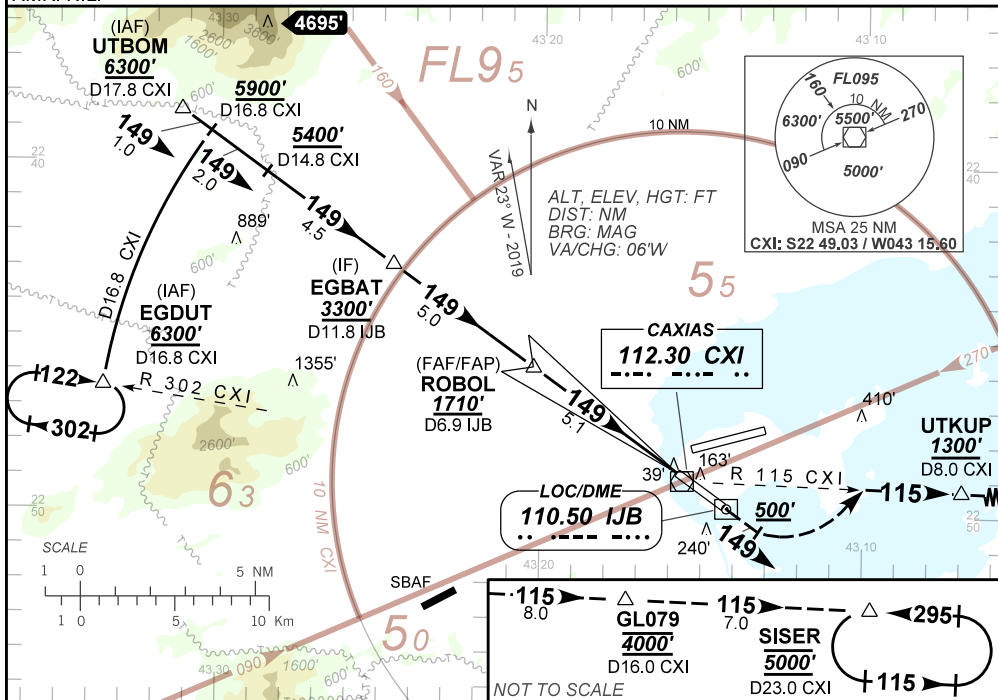
ILS R ou/or LOC R RWY 15

D-ATIS 127.60	APP RIO 133.30 126.20 129.80 125.95 128.90 119.35 134.40 121.25 121.50			TWR GALEÃO 118.00 118.20 121.50	GND C GALEÃO 121.65 128.35
LOC IJB 110.50 MHz	FINAL CRS 149°	FAF 1710'	DA / (OCH): CAT I	LOC ONLY MDA / (OCH): 730' / (713')	

APCH Perdida: Subir para 5000'. Manter rumo 149 até 500'. Curvar à ESQUERDA, RDL 115 CXI até UTKUP. Após, manter RDL 115 CXI até SISER para espera.

Missed APCH: Climb to 5000'. Maintain course 149 until 500'. Turn LEFT 115 CXI RDL up to UTKUP. After, maintain 115 RDL CXI up to SISER for holding.

RMK: NIL.



TO THR 15 (NM)	10.1	5.1	2.1	0.4
TO IJB (NM)	11.9	6.9	3.9	2.2

ROBOL	4.0	3.0	2.1	1.0	0.4	RWY15	KT	090	110	130	150	170	190
1710	1360	1040	730	390	217	ALT	FPM	500	600	700	800	900	1000
1694	1343	1023	713	373	200	(HGT)	FAF-MAPT	NA					

STRAIGHT-IN	CAT	A	B	C	D	E	
	DA / (OCH)	217' / (200')				259' / (242')	
CAT I	ALS/NO ALS/ RVR ALS (m)	800 / 1200 / 700				800 / 1300 / 700	
	MDA / (OCH)	730' / (713')					
LOC ONLY	ALS/NO ALS/RVR ALS (m)	800 / 1600 / 700			2700 / 3400 / NIL		
	MDA / (OCH)	NA					
CIRCLING	MDA / (OCH)	NA					
	VIS (m)	NA					

CHANGES: NEW CHART.