

CARTA DE APROXIMAÇÃO
POR INSTRUMENTOS (IAC)
INSTRUMENT APPROACH CHART (IAC)

BRASÍLIA / Pres. Juscelino Kubitschek, INTL (SBBR)

RNAV(GNSS) Y RWY 11L

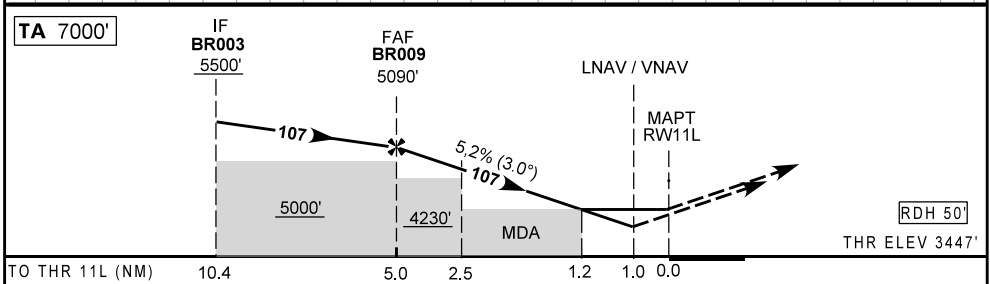
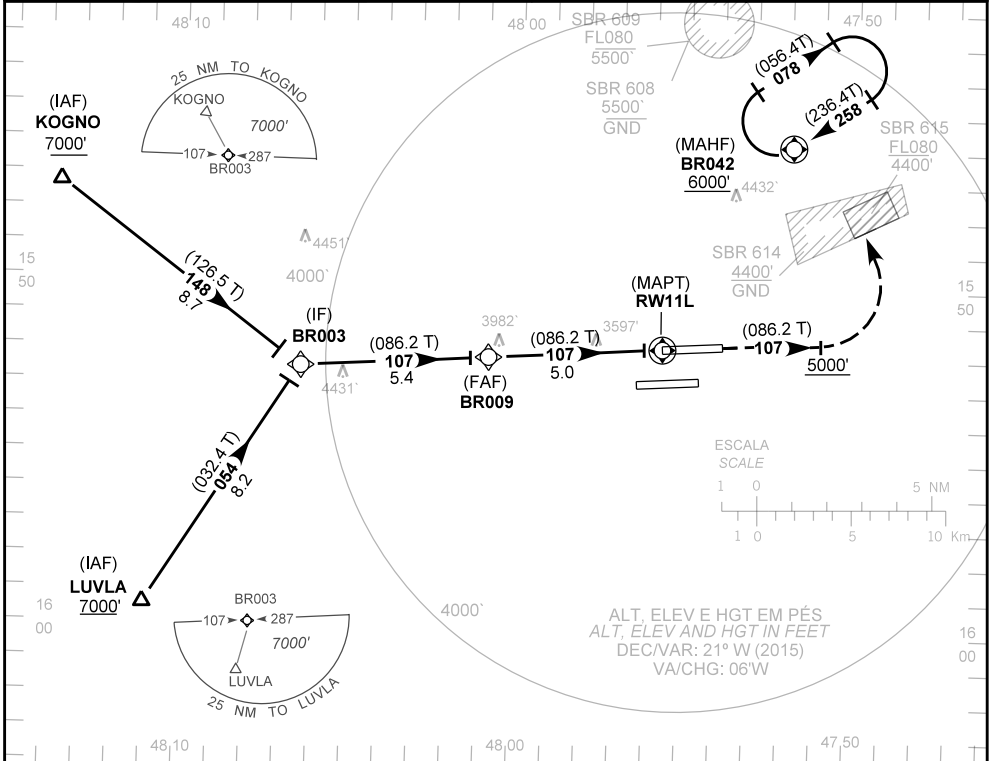
AD ELEV: 3498'	D-ATIS 127.80	APP BRASÍLIA 119.20 119.50 119.70 120.00 120.65 129.15 129.60 121.50	TWR BRASÍLIA 118.10 118.45 118.75 121.50	GNDC BRASÍLIA 121.80 121.95
----------------	------------------	--	--	--------------------------------

RMK: 1) Procedimento BARO-VNAV não autorizado abaixo de 0°C.
2) Observar compulsoriamente seção CAR da AIP-MAP.
3) RNP APCH.

RMK: 1) *BARO-VNAV procedure not authorized below 0°C.*
2) *CAR section of AIP-MAP shall be observed.*
3) *RNP APCH.*

Aproximação Perdida: Subir para 6000' no rumo 107. Após 5000', curvar à esquerda para espera em BR042.

Missed Approach: Climb to 6000' course 107. After 5000', turn left direct BR042 for holding.



BR009	4.0	3.0	2.0	1.0	RW11L	KT	090	110	130	150	170	190
5090	4771	4452	4134	3811	ALT	FPM	500	600	700	800	900	1000
1642	1324	1005	687	364	(HGT)	FAF-MAPT 5NM	NIL					

POUSO DIRETO STRAIGHT-IN	CAT	A	B	C	D	E
	DA / OCH	3811 / 370				
LNAV / VNAV	ALS/NO ALS/ RVR ALS (m)	1000 / 1700 / NIL				
	MDA / OCH	3860 / 420				
LNAV	ALS/NO ALS/RVR ALS (m)	800 / 1600 / NIL		1100 / 1900 / NIL		

CIRCULAR TO CIRCLE	MDA / OCH	NA
	VIS (m)	

CHANGES: D-ATIS, ELEV, FREQ.