

INSTRUMENT APPROACH
CHART (IAC)

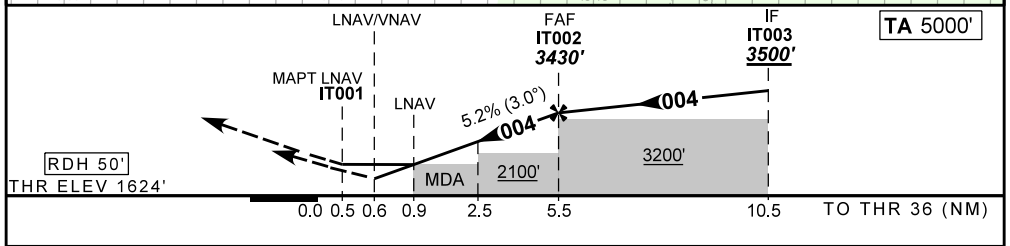
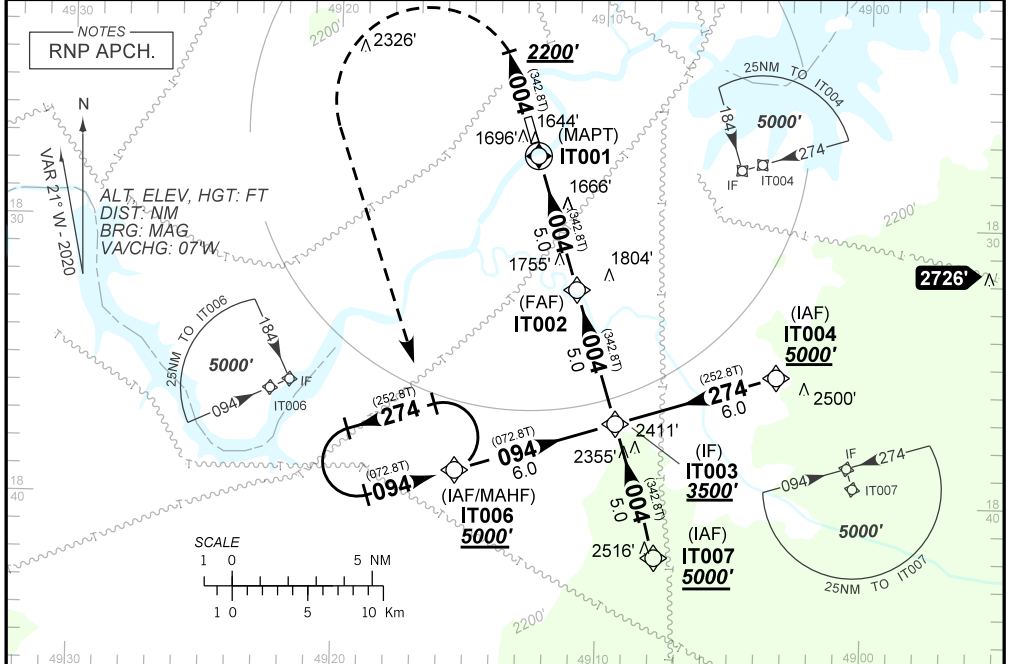
ITUMBIARA / Hidrelétrica de Itumbiara (SBIT)

AD ELEV: 1631'

RNAV(GNSS) Z RWY 36

ATIS NIL	APP NIL	AFIS ITUMBIARA 130.30	GNDC NIL
N/A	FINAL CRS 004°	FAF: 3430'	DA / (OCH): 1874' / (250') MDA / (OCH): 1950' / (320')

APCH Perdida: Subir para **5000'**, no rumo **004**. Ao passar **2200'**, curvar à ESQUERDA direto IT006 para espera.
Missed APCH: Climb to **5000'**, course **004**. After passing **2200'**, turn LEFT direct IT006 for holding.
RMK: Para sistemas não compensados BARO-VNAV, LNAV/VNAV NÃO AUTORIZADO abaixo de 0°C ou acima de 46°C.
For uncompensated systems BARO-VNAV, LNAV/VNAV NOT AUTHORIZED below 0°C or above 46°C.



RWY36	0.9	2.0	3.0	4.0	5.0	IT002	KT	090	110	130	150	170	190
ALT	1950	2311	2629	2948	3266	3430	FPM	500	600	700	800		NA
(HGT)	320	687	1005	1324	1642	1801	FAF-MAPT				NA		

STRAIGHT-IN	CAT	A	B	C	D	E
LNAV/VNAV	DA / (OCH)	1874' / (250')				NA
	ALS/NO ALS/ RVR ALS (m)	NIL / 1300 / NIL				
LNAV	MDA / (OCH)	1950' / (320')				
	ALS/NO ALS/ RVR ALS (m)	NIL / 1400 / NIL				
CIRCLING	MDA / (OCH)	NA				
	VIS (m)					

CHANGES: NEW CHART