

MACEIÓ / ZUMBI DOS PALMARES, INTL

AL-BRASIL

VOR Y RWY 30

IAC - SBMO

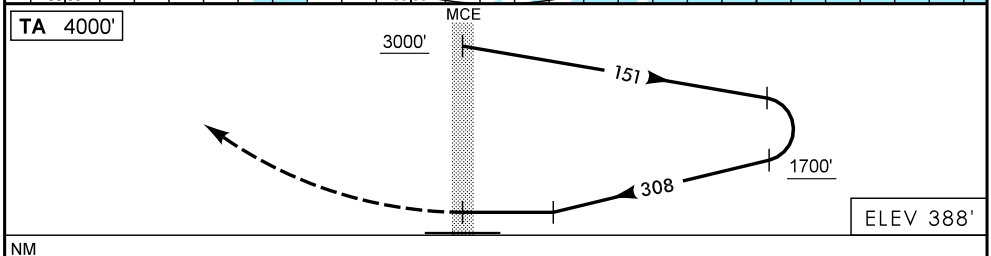
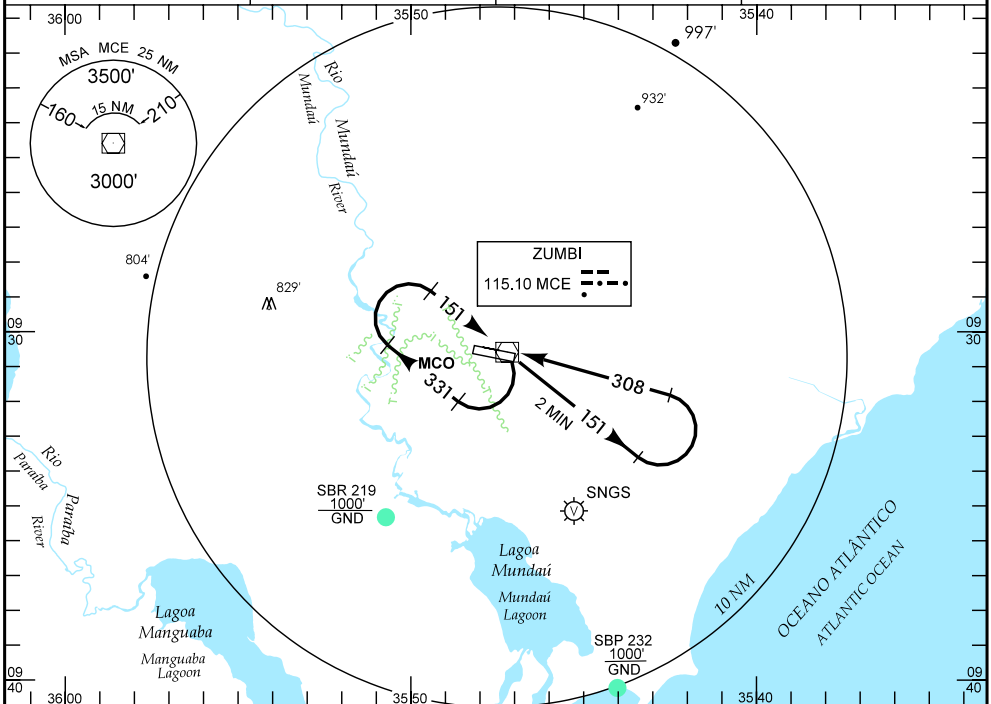
WGS-84

ATIS  
NIL

APP MACEIÓ  
119.25 128.90

TWR MACEIÓ  
118.00 118.25

GNDC  
NIL



NM

**APROXIMAÇÃO PERDIDA**  
MISSED APPROACH

SUBIR PARA 3000' NA RDL 308.  
CLIMB TO 3000' AT RDL 308.

RMK NIL

C	POUSO DIRETO RWY 30	STRAIGHT-IN TO RWY 30	IFR OPS	DIURNA / NOTURNA DAY / NIGHT	PARA CIRCULAR TO CIRCLING			
	A	VOR			CAT	MDA	TETO CEILING	VIS
T	MDA 980'		TETO CEILING 600'		A	980'	600'	1600 M
A	VIS				B			
B	1600 M				C	1170'	800'	3600 M
C	2800 M				D			4000 M
D	3200 M				E	1280'	900'	4800 M
E	3600 M							

RAZÃO DE DESCIDA NA APROXIMAÇÃO FINAL RATE OF DESCENT ON FINAL APPROACH											
KT	90	110	130	140	160	180					
FPM	600										

X:\IAAC\IAC-SBMO\brmo\_1cc\_vg-y\_rwy30.dgn

DEPARTAMENTO DE CONTROLE DO ESPAÇO AÉREO - COMAER - BRASIL