

**INSTRUMENT APPROACH
CHART (IAC)**

SÃO PEDRO DA ALDEIA / São Pedro da Aldeia, MIL (SBES)

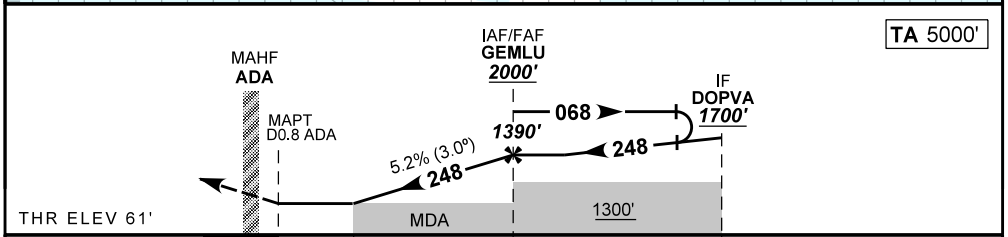
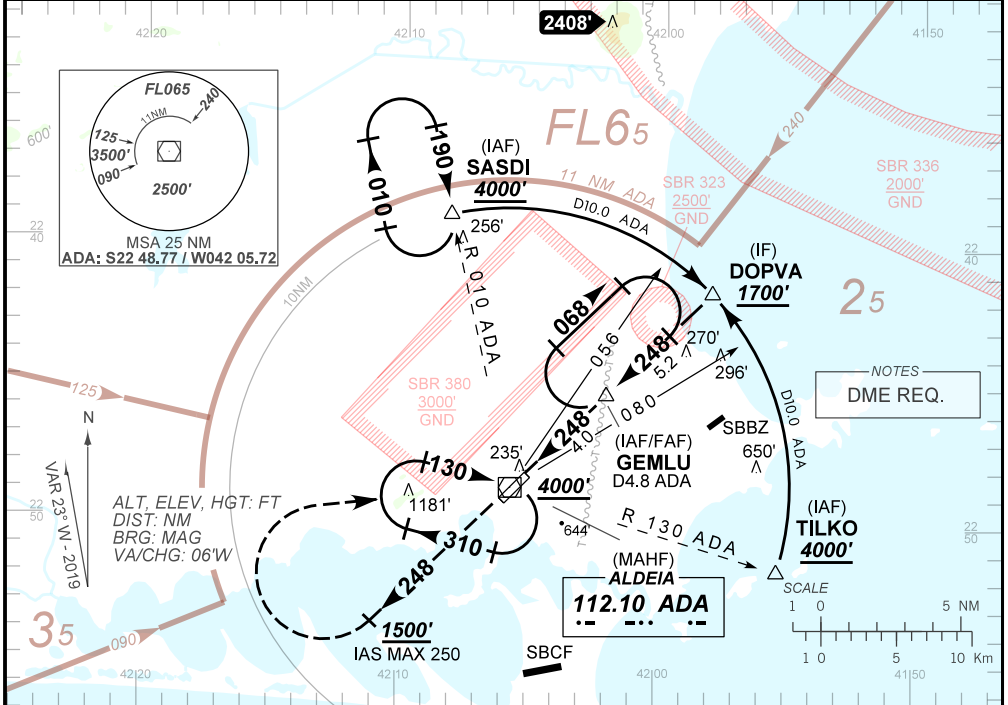
AD ELEV: 61'

VOR Z RWY 25

ATIS NIL	APP ALDEIA 119.45 120.30	TWR ALDEIA 118.30 122.80 (MIL) 121.50	GNDC ALDEIA 121.90
VOR/DME ADA 112.10 MHz	FINAL CRS 248°	FAF 1390'	VOR MDA / (OCH): 500' / (440')

APCH Perdida: Subir para **4000'**. Manter rumo **248** até cruzar **1500'**. Então, curvar à DIREITA, IAS MAX 250 KT, direto VOR Aldeia para espera.
 Missed APCH: Climb to **4000'**. Maintain course **248** until passing **1500'**. Then, turn RIGHT, IAS MAX 250 KT, direct to Aldeia VOR for holding.

RMK: NIL.



0.0	1.2	4.0	9.2	TO THR 25 (NM)
0.8	2.0	4.8	10.0	TO ADA (DME)

RWY25	1.2	2.0	3.0	GEMLU		KT	090	110	130	150	170	190
ALT	500	748	1066	1390		FPM	500	600	700	800	900	1000
(HGT)	440	687	1005	1329		FAF-MAPT	NA					

STRAIGHT-IN	CAT	A	B	C	D	E
VOR	MDA / (OCH)	500' / (440')				
	ALS/NO ALS/ RVR ALS (m)	NIL / 1600 / NIL		NIL / 2000 / NIL		
CIRCLING	MDA / (OCH)	NA				
	VIS (m)					

CHANGES: NEW CHART.