

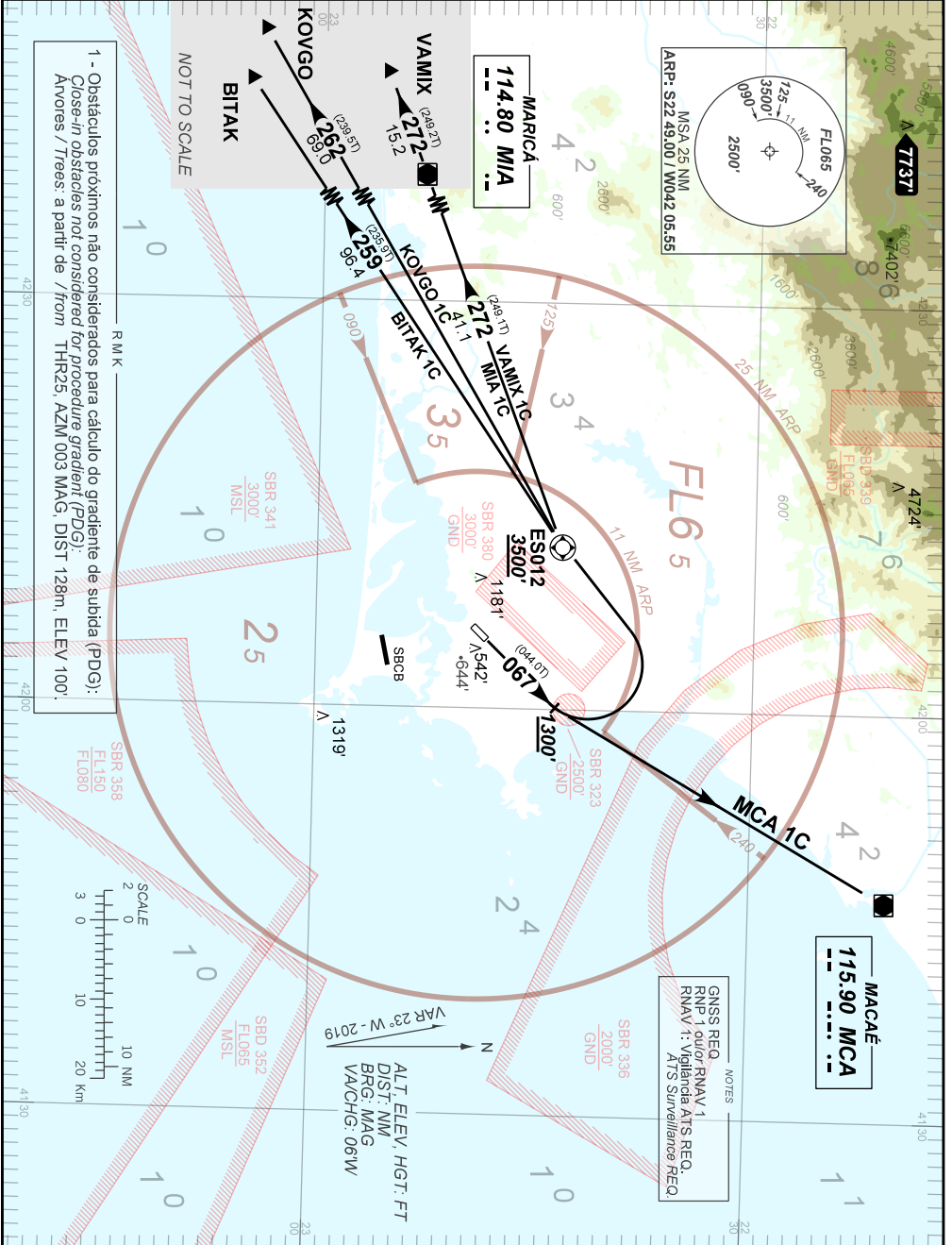
STANDARD DEPARTURE CHART
INSTRUMENT (SID)

SÃO PEDRO DA ALDEIA / São Pedro da Aldeia, MIL (SBES)
RWY 07

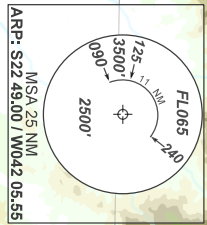
AD ELEV: 61'

RNAV BITAK 1C - KOVGO 1C - MCA 1C - MIA 1C - VAMIX 1C

TA 5000'	TWR ALDEIA 118.30 122.80 (MIL) 121.50	APP ALDEIA 119.45 120.30	APP RIO 119.00 119.35 126.20 133.30	APP MACAÉ 119.20 120.00 129.30 121.50	ACC CURITIBA 125.35 124.00 133.40 133.60
----------	---	-----------------------------	---	---	--

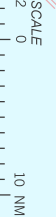


1 - Obstáculos próximos não considerados para cálculo do gradiente de subida (PDG):
Close-in obstacles not considered for procedure gradient (PDG):
Aviores / Trees: a partir de / from THR25, AZIM 003 MAG, DIST 128m, ELEV 100'



NOTES
GNSS REQ.
RNP 1 ou RNPV 1
RNAV 1: Vigilância AIS REQ.
A/S Surveillance REQ.

ALT ELEV, HGT, FT
DIST, NM
BRG: MAG
VAOCHG: 06W



CHANGES: NEW CHART.