

INSTRUMENT APPROACH CHART (IAC)

SÃO PEDRO DA ALDEIA / Tenente Jorge Henrique Möller, MIL (SBES)

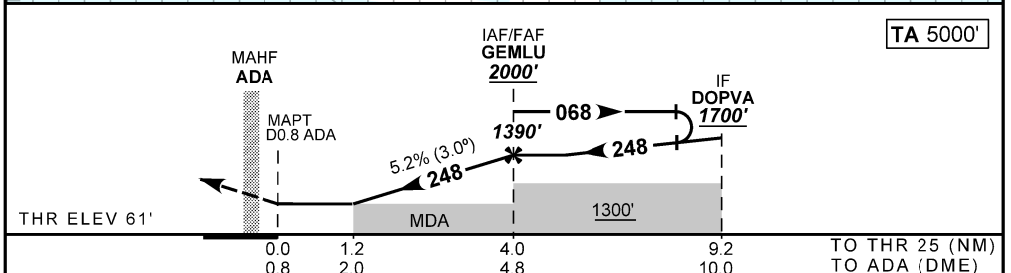
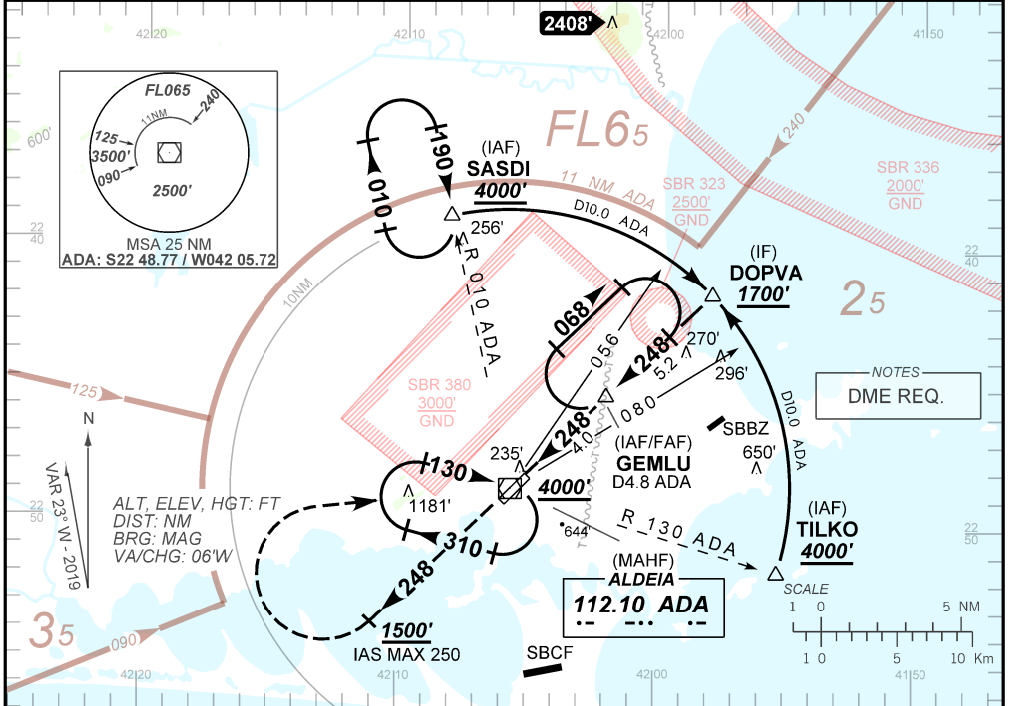
AD ELEV: 61'

VOR Z RWY 25

| | | | |
|---------------------------|-----------------------------|--|-----------------------------------|
| ATIS NIL | APP ALDEIA 119.45 120.30 | TWR ALDEIA 118.30 122.80 (MIL) 121.50 | GNDCL ALDEIA 121.90 |
| VOR/DME ADA 112.10 MHz | FINAL CRS 248° | FAF 1390' | VOR MDA / (OCH): 500' / (440') |

APCH Perdida: Subir para **4000'**. Manter rumo **248** até cruzar **1500'**. Então, curvar à DIREITA, IAS MAX 250 KT, direto VOR Aldeia para espera.
 Missed APCH: Climb to **4000'**. Maintain course **248** until passing **1500'**. Then, turn RIGHT, IAS MAX 250 KT, direct to Aldeia VOR for holding.

RMK: NIL.



| | | | | | | | | | | |
|-------|-----|-----|------|-------|--|--|--|--|--|--|
| RWY25 | 1.2 | 2.0 | 3.0 | GEMLU | | | | | | |
| ALT | 500 | 748 | 1066 | 1390 | | | | | | |
| (HGT) | 440 | 687 | 1005 | 1329 | | | | | | |
| | | | | | | | | | | |

| | | | | | | |
|-------------|-------------------------|------------------|---|------------------|---|---|
| STRAIGHT-IN | CAT | A | B | C | D | E |
| VOR | MDA / (OCH) | 500' / (440') | | | | |
| | ALS/NO ALS/ RVR ALS (m) | NIL / 1600 / NIL | | NIL / 2000 / NIL | | |
| CIRCLING | MDA / (OCH) | NA | | | | |
| | VIS (m) | | | | | |

CHANGES IDENT.