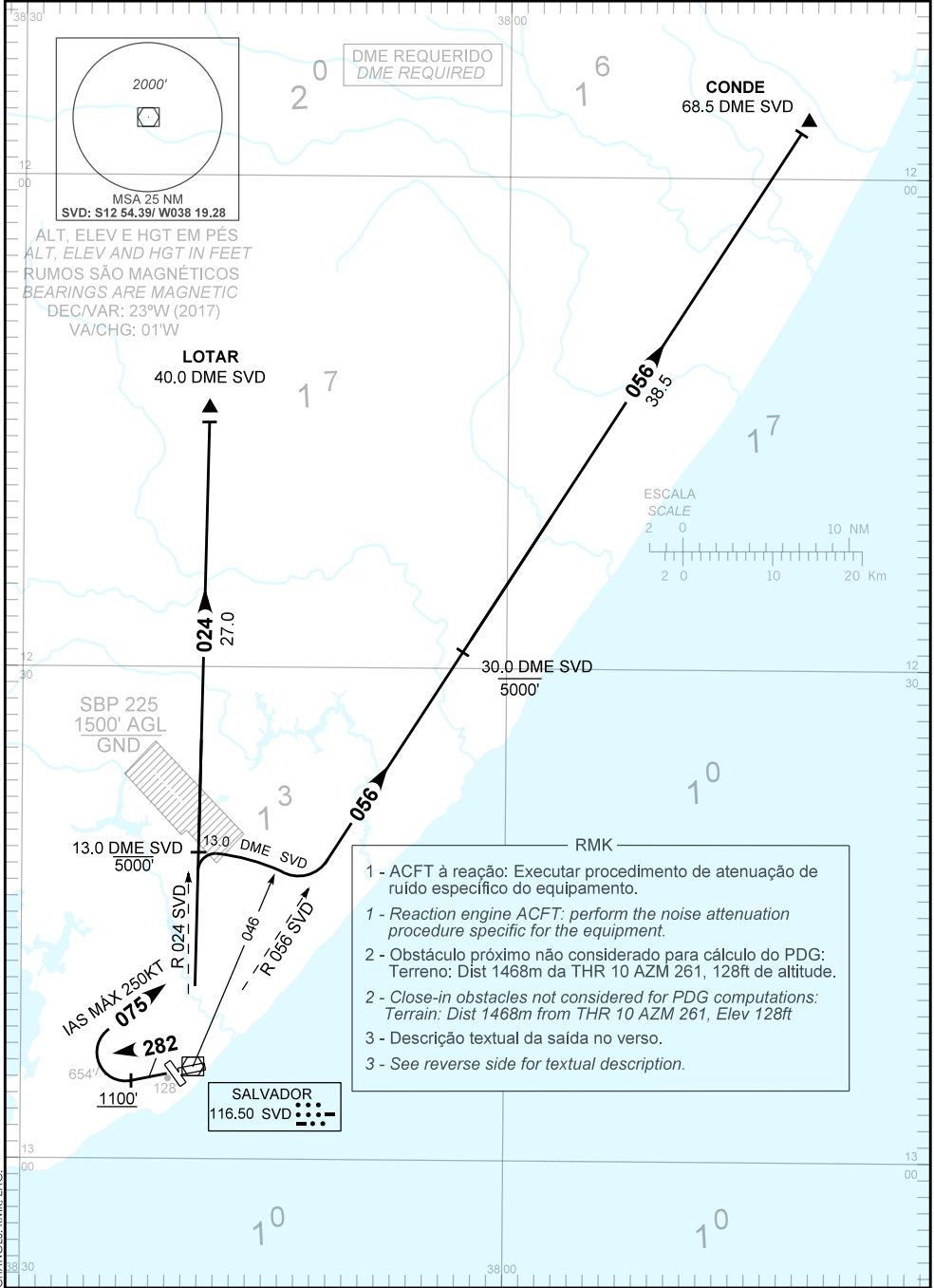


CARTA DE SAÍDA PADRÃO
 POR INSTRUMENTOS (SID)
 STANDARD DEPARTURE CHART
 INSTRUMENT (SID)

SALVADOR / Deputado Luís Eduardo Magalhães, INTL (SBSV)

**RWY 28
 CONDE 1B - LOTAR 1B**

TA 7000'	TWR SALVADOR 118.30 118.60 118.95 121.10 121.50	APP SALVADOR 119.35 119.80 120.80 129.45	ACC RECIFE 125.45 126.85 121.50
----------	---	---	------------------------------------



CHANGES: RMK-EAC

DESCRIÇÃO TEXTUAL
TEXTUAL DESCRIPTION

RWY 10

Após decolagem, manter RDL 282 SVD até passar 1100'. Após, curvar à direita, proa 075 para interceptar e manter a RDL 024 SVD. Então, ...

SAÍDA CONDE 1B:

... ingressar no arco 13.0 DME SVD até a RDL 056 SVD. Manter a RDL 056 SVD até CONDE.

SAÍDA LOTAR 1B:

... manter a RDL 024 SVD até LOTAR.

RWY 10

After take-off, maintain 282 SVD RDL until passing 1100'. After, turn right, heading 075 in order to intercept and maintain 024 SVD RDL. Then, ...

CONDE 1B DEPARTURE:

... join 13.0 DME SVD arc up to 056 SVD RDL. Maintain 056 SVD RDL up to CONDE.

LOTAR 1B DEPARTURE:

... maintain 024 SVD RDL up to LOTAR.